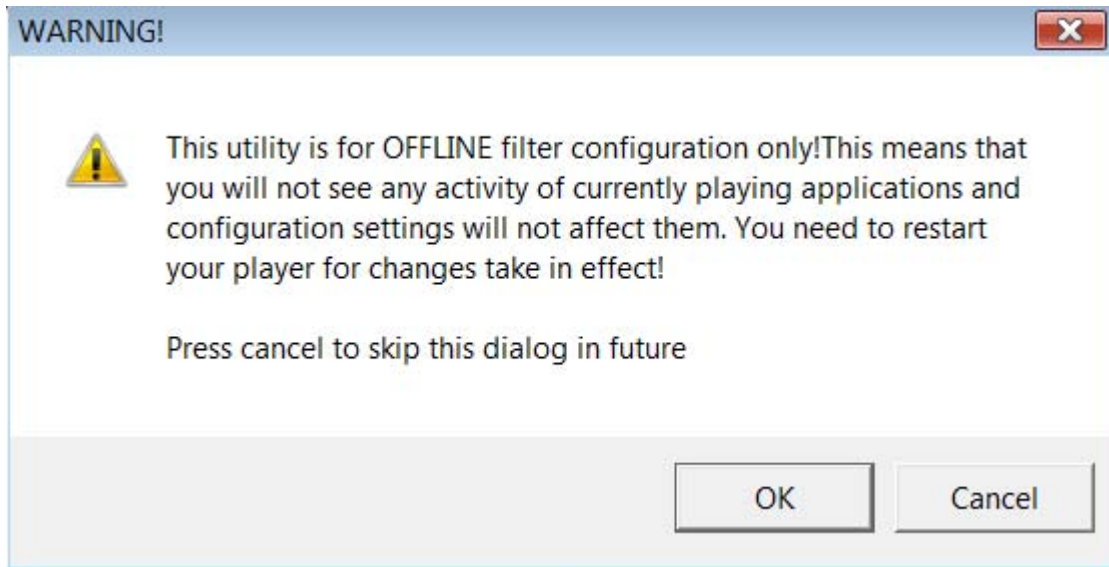


Sage - How do I properly configure audio to output through spdif

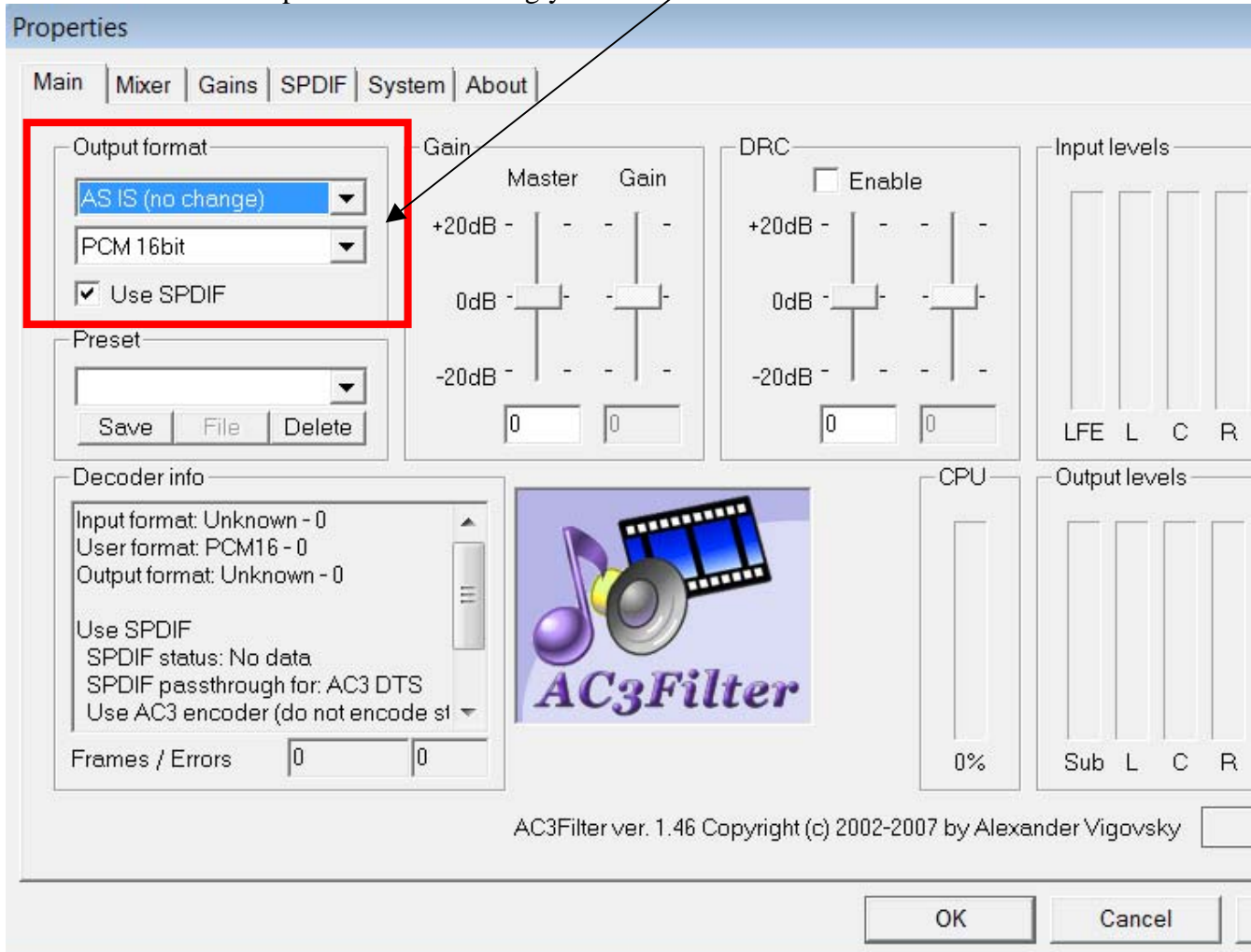
1.) Browse to your Sage folder: C:\Program Files (x86)\SageTV\SageTV

A) run this file: ac3config.exe

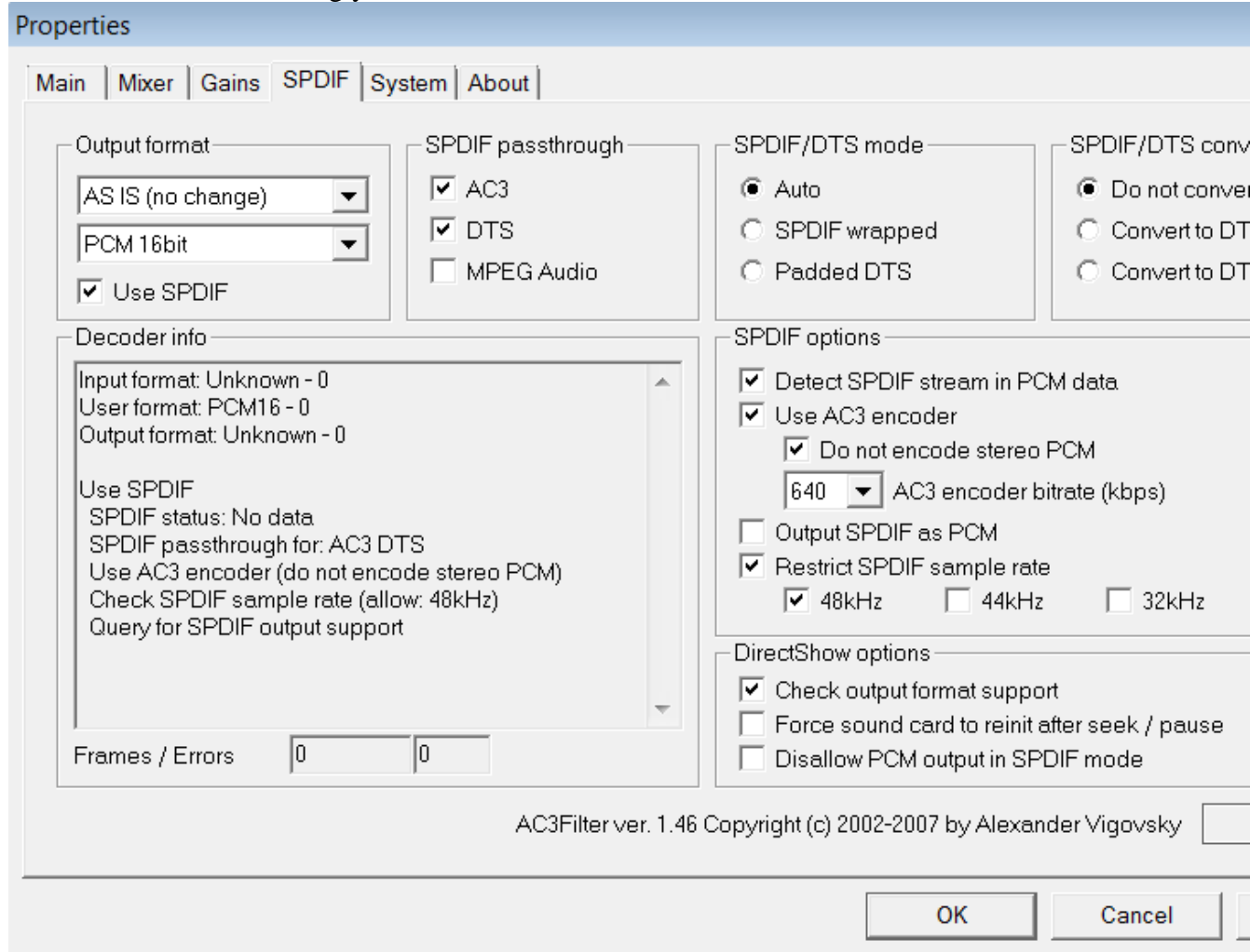
Click OK



On Main Tab - Set Output Format accordingly



SPDIF Tab – Set accordingly, then click OK



then go into SageTv > Setup > Detailed Setup > Video / Audio

set the following : MPEG2 Audio Decoder Filter > AC3Filter

Exit Sage or Sage Service and restart.