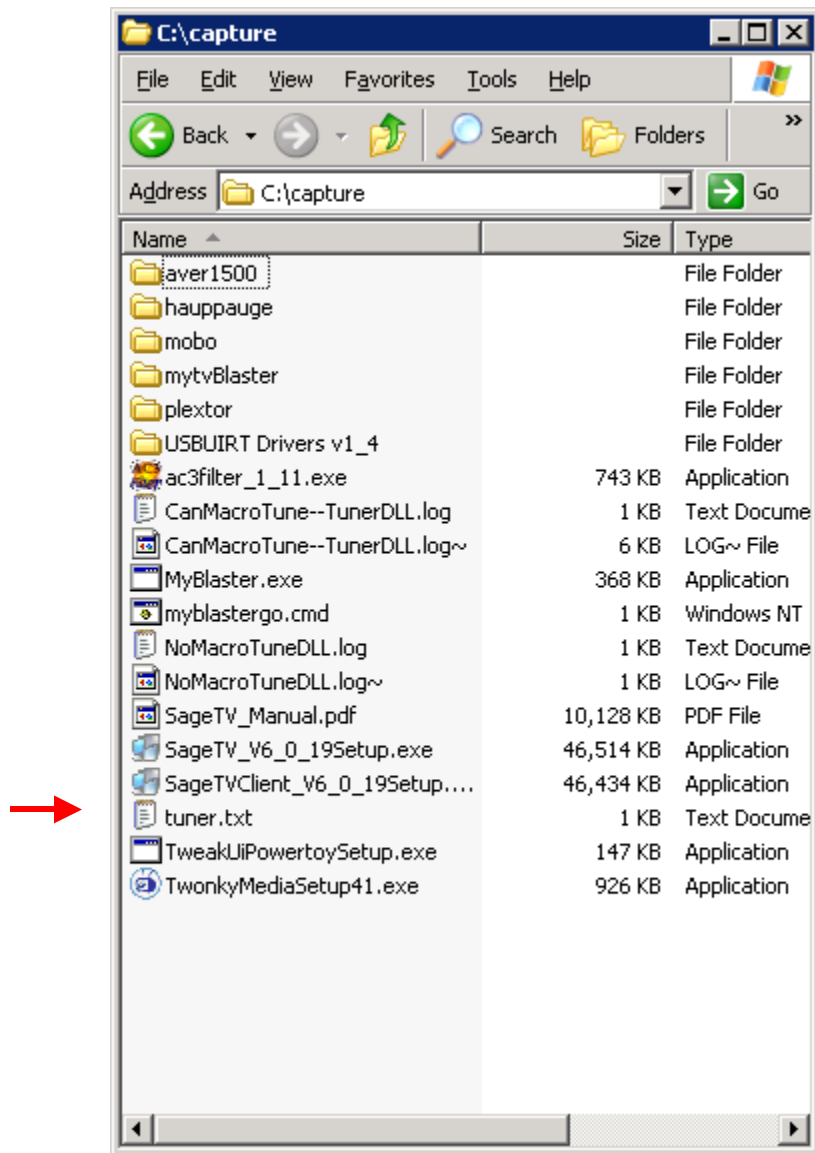
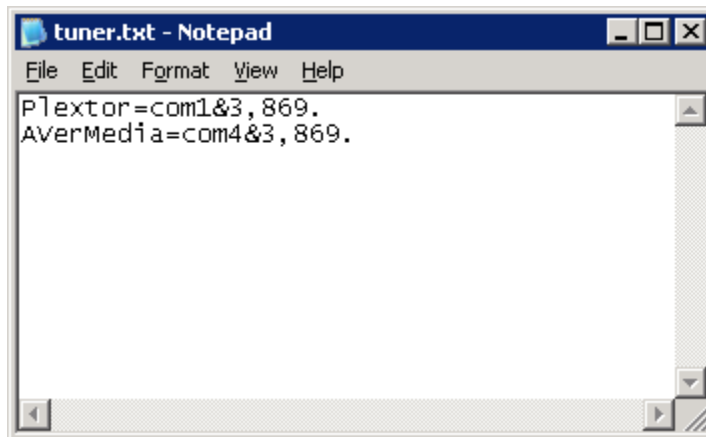


Step 1: Setup myblaster settings



- Create a file in c:\capture called tuner.txt

Step 1a: Editing the myblaster settings file

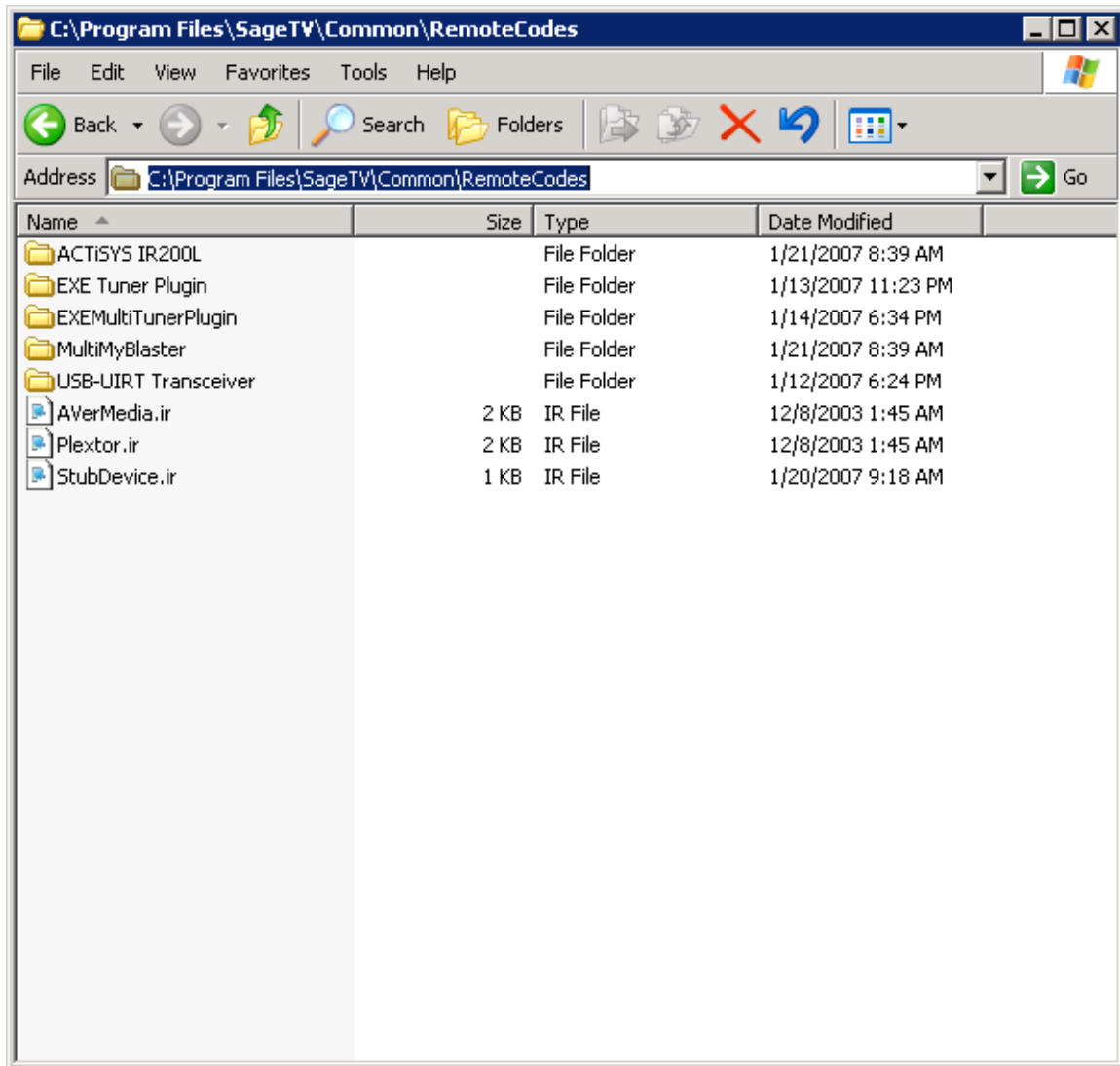


- Each tuner gets its own line in the file.
- Format of each line is:
 - `<TunerName>=<comport>&<ueitype>,<ueicode>`.
 - TunerName is what the tuner is called in Sage. More on this later.
 - Comport is the comport the myblaster is connected to.
 - Ueitype and ueicode can be found at <http://www.my.tv/ueicodes.html>

Step 2: Copying the dll

- Copy the dll (MultiBlast.dll) to C:\Program Files\SageTV\Common

Step 3: Setting up tuner names for Sage



- Create ir files (as shown for AVerMedia.ir and Plextor.ir).
- The names of these files must match the name set in tuner.txt in Step 1a. Note: I copied Starchoice.ir from the ActiSys IR200L and renamed it AVerMedia.ir and Plextor.ir. I did not change the contents of the files.
- The MultiMyBlaster folder will get created. Let the program create this.

Step 4: Setting up a Tuner

- Choose the MultiMyBlaster as the tuning device.

Step 5: Naming the Tuner

- Select setup video source and select Tuner Control

SageTV Client

SAGE^{tv} **Source Details** REC ⏏ ☾ Mon, Jan 22 10:25 PM

Channel Setup
Color Calibration
Remove Source
Back to Summary

Source: AVerMedia AVerTV MPEG Video Capture Composite

Functioning: true

Network Encoder: false

Currently Being Used for Live TV: false

Input Type: Composite

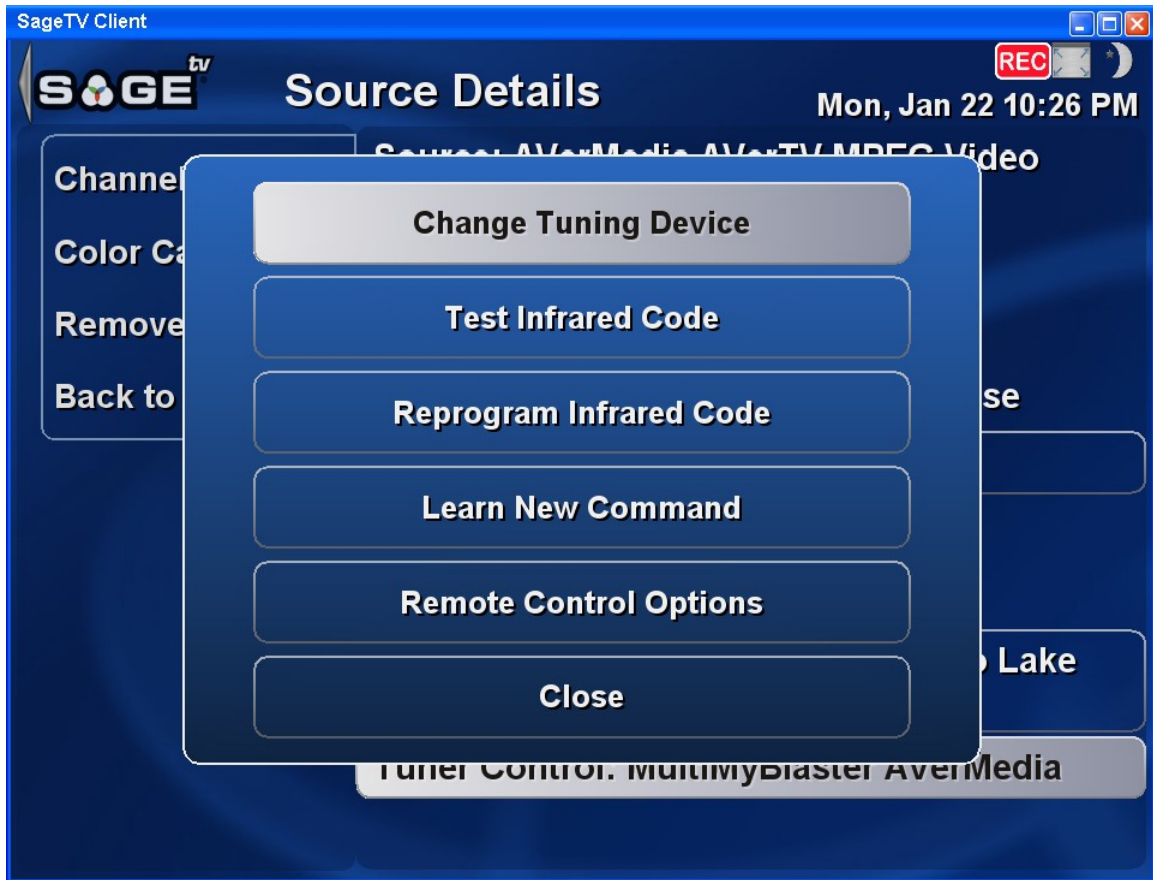
RF Channel: N/A

Cable/Antenna: N/A

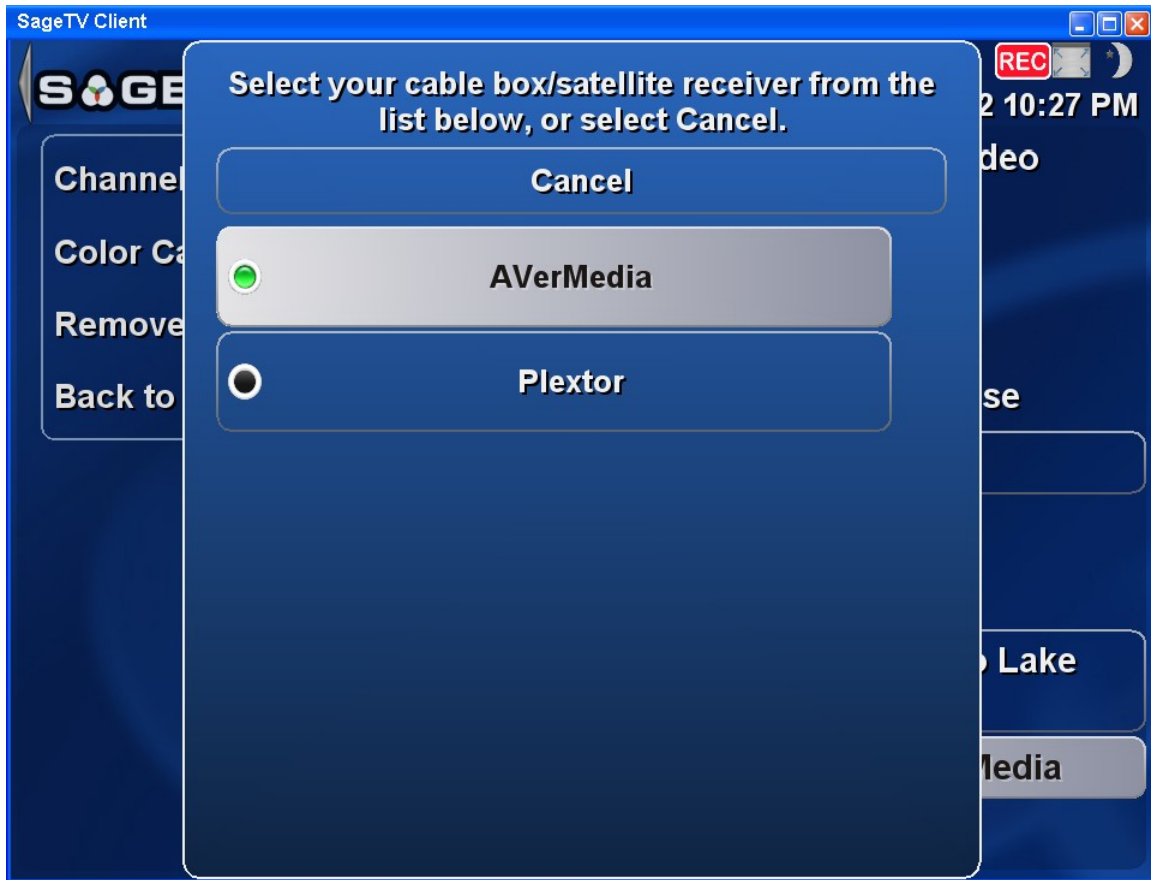
EPG Lineup: Millennium Digital Echo Lake Digital - Snohomish

Tuner Control: MultiMyBlaster AVerMedia

- Select Change Tuning device



- Select the Tuner Name that was set in tuner.txt



Appendix: How to figure out the codes for your device

I've included an exe that will change channels via the command line. This will allow for experimentation.

Usage is:

```
myblaster.exe -file c:\capture\tuner.txt -tuner Plextor -channel 49
```