

Objective: Add remote control support to my HTPC for SageTV and mp3 music playback

Updated: February 10, 2009

[Copying items from someone else's file](#)

Software: SageTV version 6.5.9 <http://www.sage.tv.com/>
EventGhost version 0.3.6.1486 <http://www.eventghost.org/>
Foobar2000 version 0.9.5 <http://www.foobar2000.org/>
PowerDVD version 8
Windows Vista Ultimate 64 bit

Hardware: IR Remote Harmony 880
Usb-Uirt - **U**niversal **I**nfrared **R**eceiver **T**ransmitter <http://www.usbuirt.com/>

Devices I added for the activities listed:

Activity	Hardware Device	Model
SageTV	Panasonic	DMR-EH75VS
Power DVD	Sony	BDP-S500
Digital Music	Panasonic	DMR-EH75VS

All Hardware and software have been preinstalled, what we need right now is a piece of hardware that has plenty of IR commands for what we want to do, like fast forward, rewind, up, down, select and so forth, so I went to <http://www.circuitcity.com/> then looked for a DVD recorder and VCR combo and then I picked the most expensive unit, I figured it would have the most IR commands, what we are looking for is a piece of equipment that you don't already own this way none of the IR commands will conflict with the equipment that you already own, I picked the [Panasonic DMR-EH75VS](#)

At this point you should open your Logitech Harmony Remote Software and log into your account, then what we want to do is add the [Panasonic DMR-EH75VS](#) , click the Devices tab then the Add Device button



Select DVD

Device Category



Please select the most appropriate Device Category:

Device Category	Sample Devices			
Television	TV	Projector	Monitor	TV DVD
Amplifier	Amplifier	AV Receiver	Audio/Video Switch	
Channel Decoder	Cable Box	Satellite	Digital Set Top Box	
Video Recorder	VCR	PVR	TV DVD VCR	TvVcr
DVD	DVD	DVD Recorder	DVD VCR	Laserdisc Player
Music Player	CD Player	CD Jukebox	Digital Music Server	Radio Tuner
Game Console	Game Console	Game Console (With DVD)		
Mini System	Mini System (DVD, CD, Radio)	Mini System (CD, Radio, Cassette)	Mini System (DVD, VCR, Radio)	
Computer	Computer	Laptop	Media Center PC	
Home Automation	Light Controller	Climate Control	Home Appliance	
More Device Types	Tape Deck	Minidisc Player	DAT	

click the Next button

Select DVD VCR

Device Types

➡ Please choose the most appropriate Device Type within this category:

Device Type	Description
<input type="radio"/> DVD	
<input type="radio"/> DVD Recorder	A DVD player that can also record to DVD (using recordable DVD discs).
<input checked="" type="radio"/> DVD VCR	A combined DVD and VCR, which may have additional inputs.
<input type="radio"/> TV DVD	A combined TV and DVD player.
<input type="radio"/> TV DVD VCR	A combined TV, VCR and DVD player.
<input type="radio"/> Mini System (DVD, CD, Radio)	A single unit which may combine functionality including CD, DVD, Radio, and Amplifier, and may have additional inputs.
<input type="radio"/> Mini System (DVD, VCR, Radio)	A single unit which may combine functionality including DVD, VCR, Radio, and Amplifier, and may have additional inputs.
<input type="radio"/> Digital Music Server	An audio device that plays stored music (usually from a hard disk or network, and usually in mp3 format).
<input type="radio"/> Laserdisc Player	

Select Panasonic in the Manufacture drop down list

Device Manufacturer

➡ Select the manufacturer of your device.

Device Type	Manufacturer
DVD VCR	<input type="text" value="Panasonic"/>

click the Next button

type in DMR-EH75 in the Model number text box

Model Numbers

➡ Enter the model number of your device:

The model number is the most important information for ensuring that the remote will control your devices correctly.

Device Type	Manufacturer	Model Number	Example Model Number
DVD VCR	Panasonic	<input type="text" value="DMR-EH75"/>	DMR-E75V

click the Next button

click the check box to confirm you model number

Devices Confirmation

➡ Please review the manufacturer and model number for the devices you have added.

If everything is correct, select the checkbox and then click Next. Click Previous to make changes to the information.

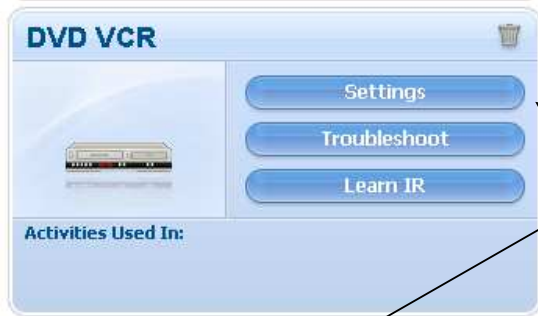
Device Type	Manufacturer	Model Number
DVD VCR	Panasonic	DMR-EH75V5

☒ All of this information is correct, no changes are required.

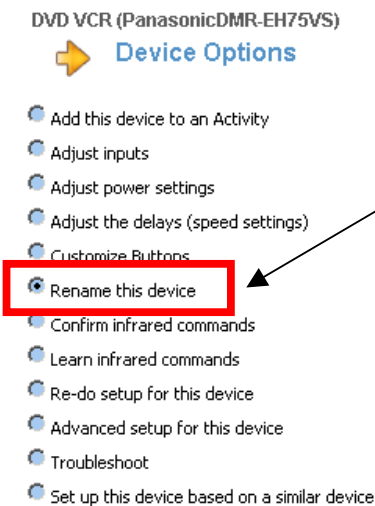
I selected this model so the Harmony software will enable all the buttons on the remote that are associated with playing TV, when the buttons on your remote are enabled they will have a IR command assigned to them that we will capture

with EventGhost and assign to a command of our choice in EventGhost, and this why I picked the Panasonic device so I would have plenty of IR commands to run my SageTV and Foobar2000 setup with only one device.

click the Next button and now the device will show up as DVD VCR



click the settings button
then select rename this device



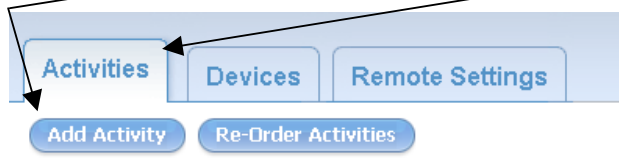
click the Next button

enter SageTV2 into the Enter the new name text box, and then click the Save button



and now the device is listed as SageTV2 and we have all the IR commands of the DVD recorder VCR combo at our disposal for the use in SageTV, now lets create a Activity and assign the device SageTV2 to it

Select the Activities tab
then the Add Activity button



Select No, and then select the next button

Adding Activity

➔ Would you like to automatically add Activities that use your devices?

Based on the devices you've added, we can automatically determine which Activities you will need and guide you through setting them up. Or, if you know the Activities you want to add, you can manually add them.

☐ Yes - automatically add Activities that use my devices.

☒ No - manually add an Activity to my setup.

Select Watch Television, then select the next button and then select the next button again

Adding Activity : Choose Activity Type

➔ What type of Activity do you want to add?

☒ Watch Television

☐ Record Video

Select Watch TV, and then select the next button and then select the next button again

Adding Activity : Choose an Activity

➔ What Activity do you want to add?

☒ Watch TV - This is the recommended Activity for watching television. (Also used for watching Satellite).

☐ Watch PVR - Watch Television with a Personal Video Recorder (PVR).

Select I use my Panasonic SageTV2 to change channels and then select the next button

Set Up Activities: Device Function

➔ To Watch TV, which device do you use to change channels?

Activity: Watch TV

☐ I use my Mitsubishi TV to change channels

☐ I use my JVC VCR to change channels

☐ I use my Hughes Tivo Living Room to change channels

☐ I use my DirecTV DirecTV HD DVR to change channels

☐ I use my Hughes Tivo Office Room to change channels

☐ I use my SageTV Sage-TV Device to change channels

☒ I use my Panasonic SageTV2 to change channels

I then selected to use my JVC AV Receiver to control the volume, and then select the next button

Set Up Activities: Device Function

➔ To Record Video, which device do you use to control the volume?

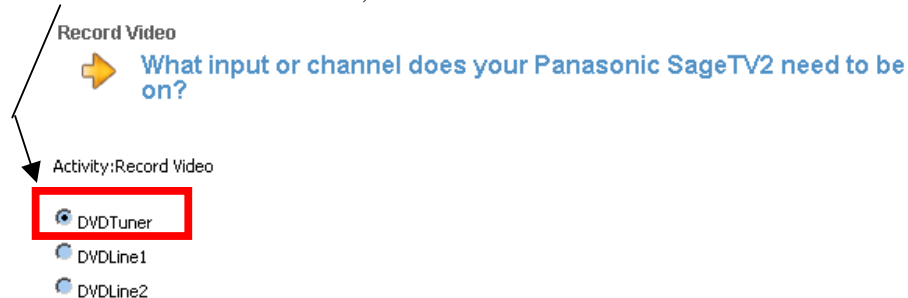
Activity: Record Video

☐ I use my Mitsubishi TV to control the volume

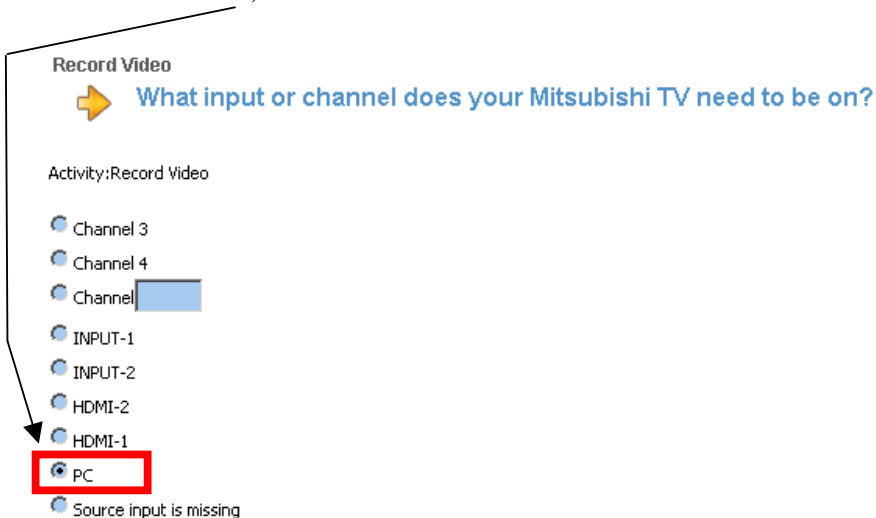
☒ I use my JVC AV Receiver to control the volume



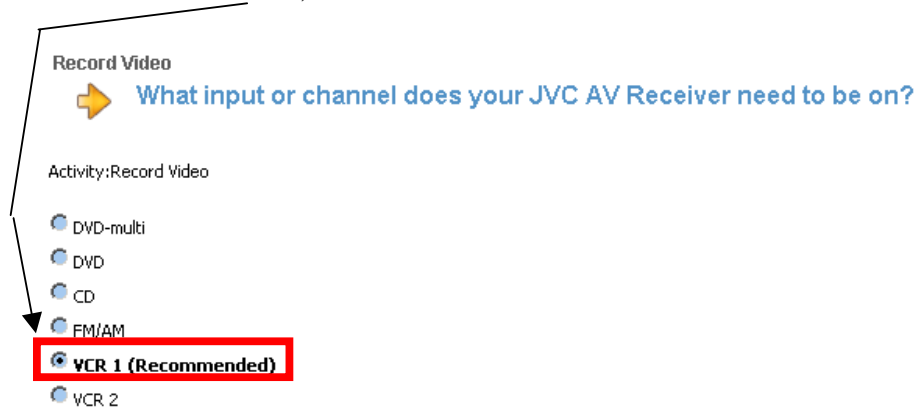
I then selected DVD Tuner, and then select the next button



I then selected PC, and then select the next button



I then selected VCR 1, and then select the next button



I clicked the next button at the following screen and then clicked the done button

Record Video

➔ [Review the settings for this Activity.](#)

Activity: Record Video

- ☒ Yes, these settings are correct.
- ☐ Yes, but I want to add more control of options and devices for this Activity.
- ☐ No, I want to run the setup wizard again to change these settings.

When you start this Activity, the remote will ensure your system is set up as follows:

Device	Status / Actions
Panasonic SageTV2	Panasonic SageTV2 is on
Mitsubishi TV	Mitsubishi TV is on
JVC AV Receiver	JVC AV Receiver is on
Other	All other devices are off
SageTV2	SageTV2 is set to "DVDTuner"
TV	TV is set to "PC"
AV Receiver	AV Receiver is set to "VCR 1"

click the Settings button on the Watch TV Activity



Select Rename Watch TV

Watch TV

➔ [Select the Activity settings you want to look at or change.](#)

- ☐ Review the settings for this Activity
- ☐ Set Up Favorite Channels
- ☐ Change Options
- ☐ Troubleshoot
- ☒ Rename Watch TV

enter SageTV into the Enter the new name text box, and then click the Save button, and then the Done button

Watch TV

➔ [Enter a new name for the Activity](#)

SageTV

click the Customize Buttons button



the first screen will show all the buttons and how they are assigned, click on the Additional Button button

Standard Button Assignments: SageTV

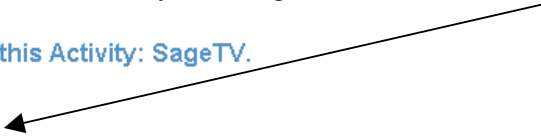
➡ [Customize standard buttons for this Activity: SageTV.](#)

Standard Buttons

Additional Buttons

Button	Device	Command
Mute	AV Receiver	Mute
Volume Up	AV Receiver	VolumeUp
Volume Down	AV Receiver	VolumeDown
Down Arrow	SageTV2	ReMaster
Up Arrow	SageTV2	ProLogic
Channel Down	SageTV2	ChannelDown
Channel Up	SageTV2	ChannelUp
Prev		
Up	SageTV2	DirectionUp
Down	SageTV2	DirectionDown
Left	SageTV2	DirectionLeft
Right	SageTV2	DirectionRight
OK	SageTV2	Select
Menu	SageTV2	Menu
Exit	SageTV2	Cancel

Reset to Defaults



I added all these

There are a few things I should point out to you

- 1.) This is the Text that will show up on your remotes color screen
- 2.) These are the IR commands

Additional Button Assignments: SageTV

➔ [Customize additional buttons for this Activity: SageTV.](#)

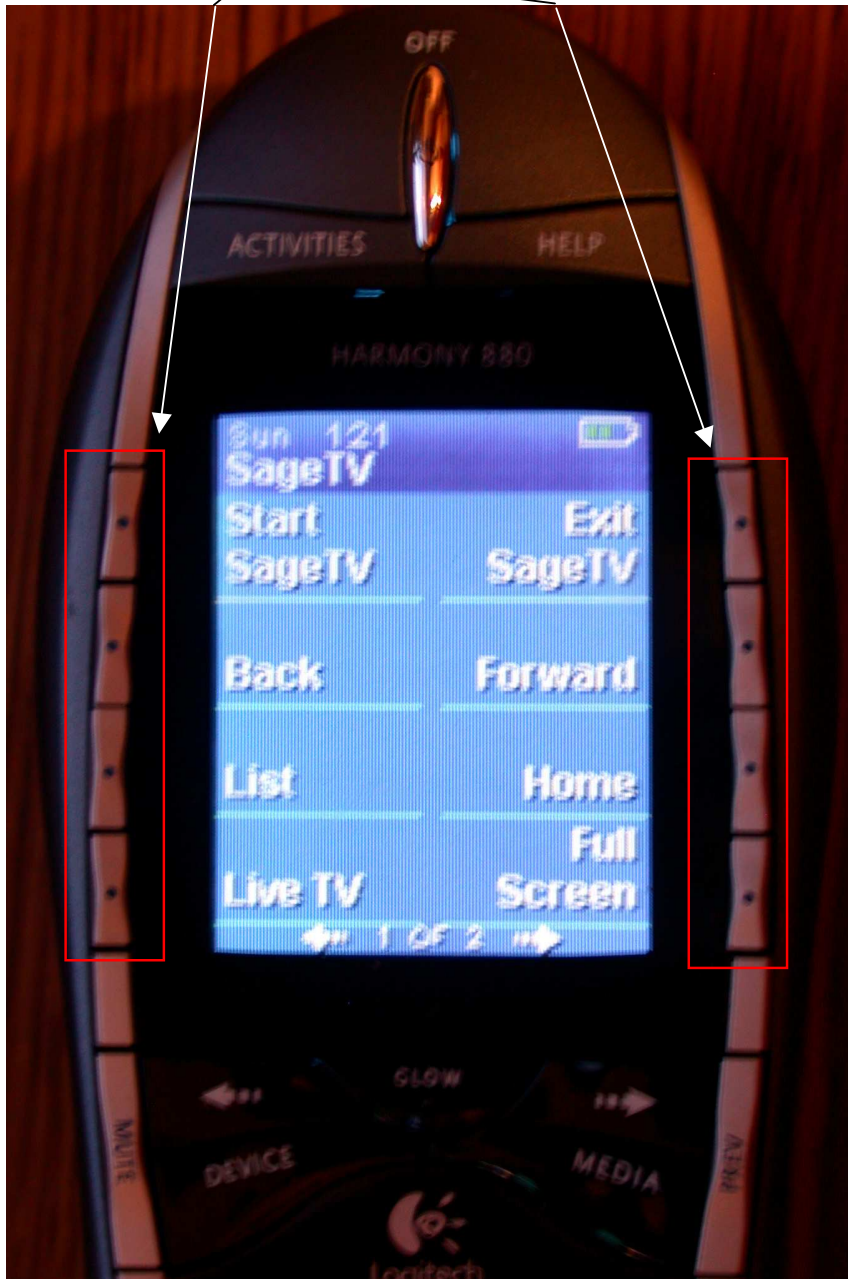
Standard Buttons

Additional Buttons

#	Label	Device	Command
1	Start SageTV	SageTV2	TimeSlip
2	Exit SageTV	SageTV2	Timer
3	Back	SageTV2	VcrRewind(VCRRewind)
4	Forward	SageTV2	VcrFastForward(VCRFas
5	List	SageTV2	Disc4
6	Home	SageTV2	VcrPause(VCRPause)
7	Live TV	SageTV2	InputTv
8	Full Screen	SageTV2	InputAux
1	Info	SageTV2	VcrRecord
2			
3			
4			
5			
6			

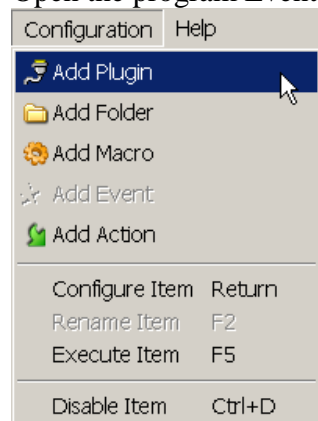
Reset to Defaults

These are the buttons the IR commands will be assigned to

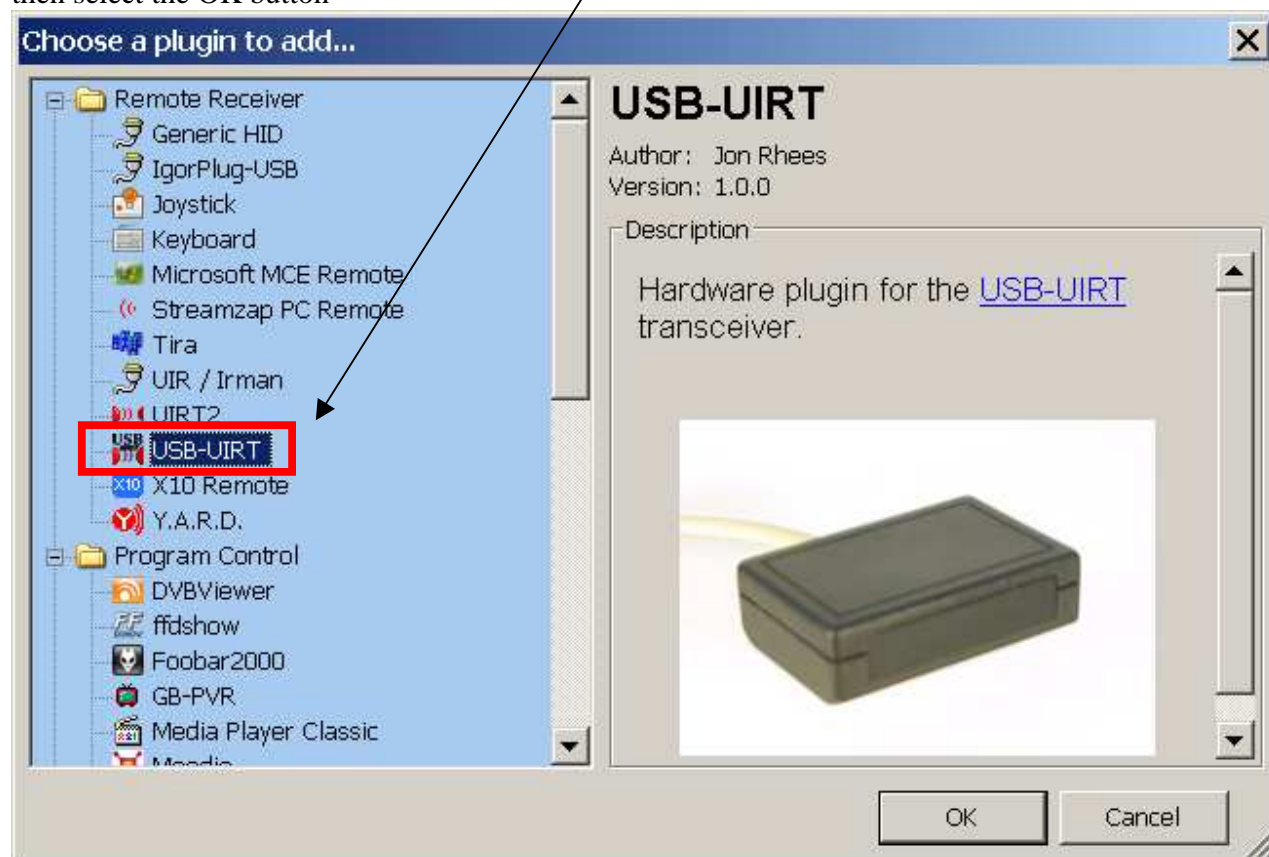


You should update your remote to reflect your new device.

Open the program EventGhost; then select the menu Configuration – Add Plugin

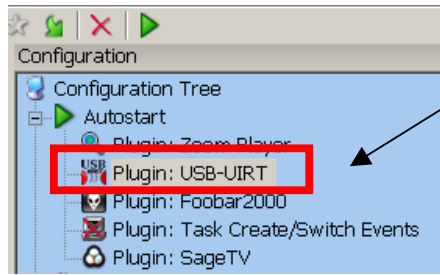


Select USB-UIRT, then select the OK button

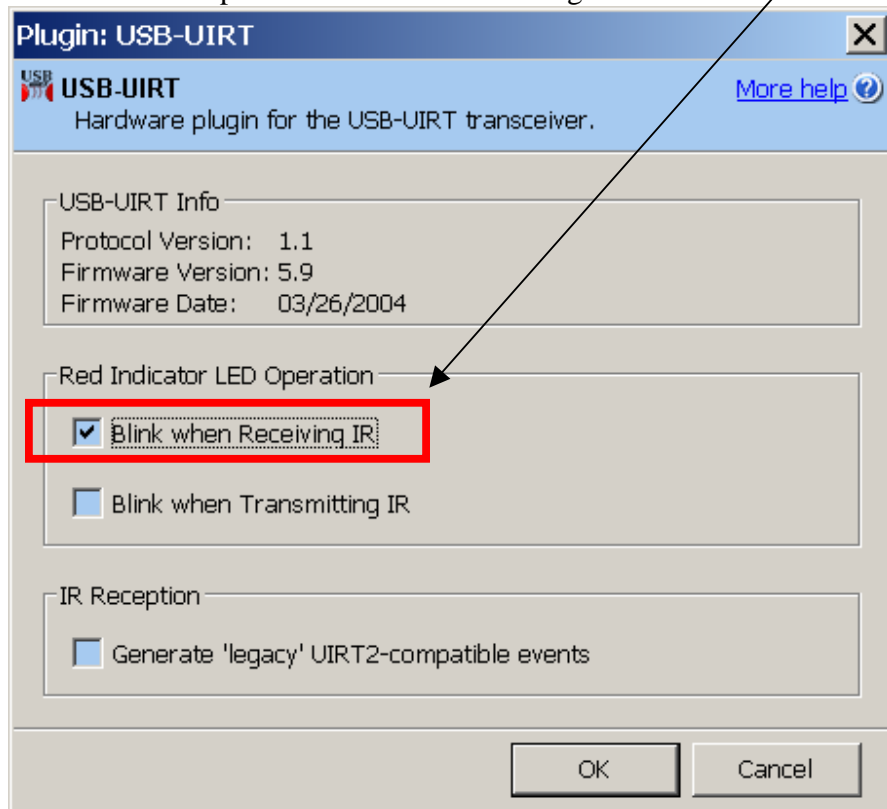


Repeat the above for SageTV and Foobar2000 plugins

Set the USB-UIRT to blink when it receives an IR command,
double click on the USB-UIRT plugin

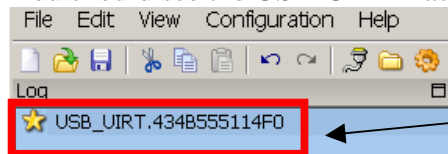


Then select the option – Blink when receiving IR



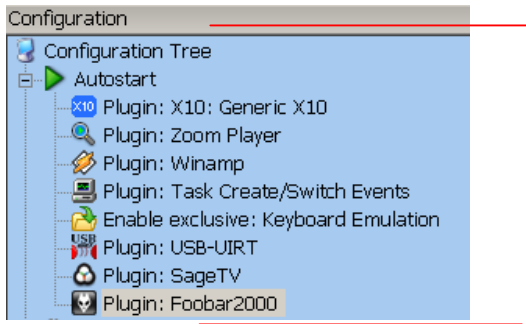
then click the OK button

Test your remote, point your remote at the USB-UIRT and push any button on your remote
You should see the USB-UIRT flash and you should see the IR command in the EventGhost Log

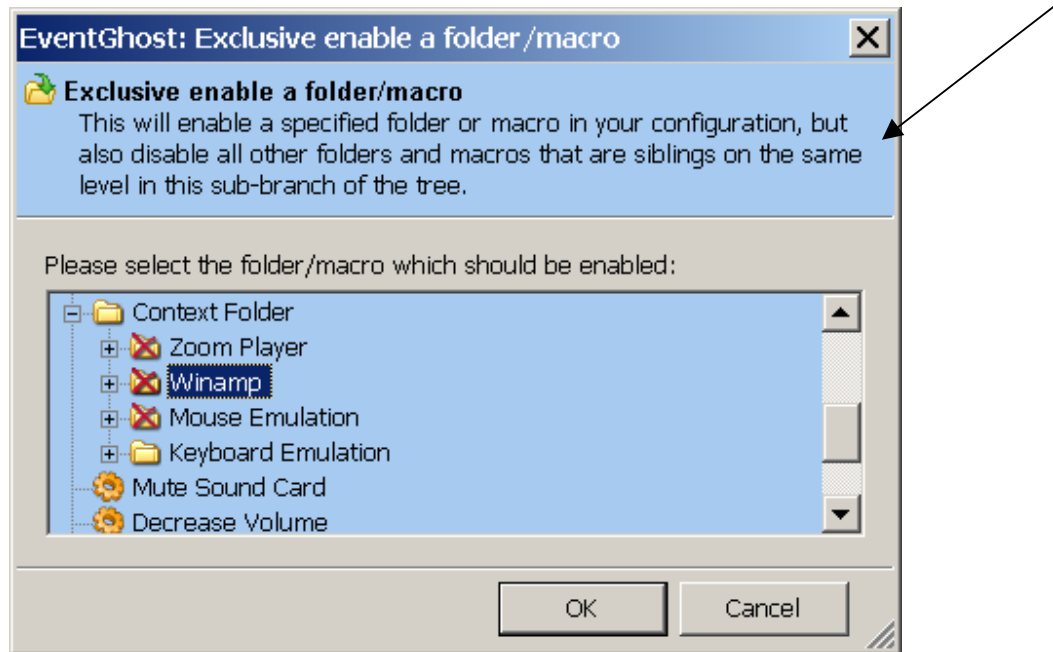


If it doesn't work you will have to refer to trouble shooting for each manufacture.

I took the Example.xml file that auto loads when you open EventGhost and modified it to my needs, first lets explain how EventGhost handles your commands, everything in the Autostart area will load and run when EventGhost is started

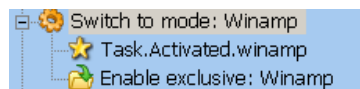
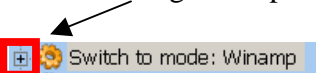


You assign an IR command to a Macro and when EventGhost sees that IR command it will run that macro and in that macro you assign an EventGhost command of Enable Exclusive as explained here

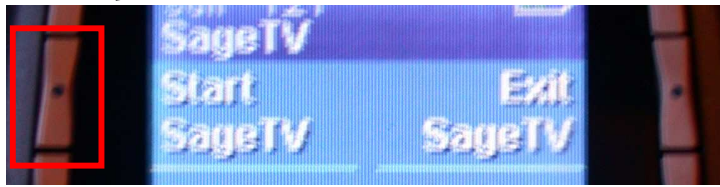


What happens is when you use the Switch to Mode you are Enabling and Disabling the folders under the Context Folder main folder, only the folders that are Enabled receive the IR commands from EventGhost.

I started with the Switch to mode: Winamp macro
click the + sign to expand

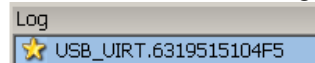


I pointed my remote at the USB-UIRT pushed the button beside Start SageTV

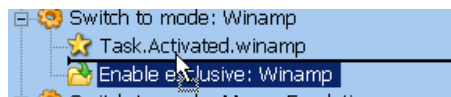


Now look at the Log in EventGhost

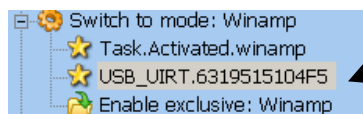
This is the IR code assigned to the Start SageTV button; select this with the left mouse button



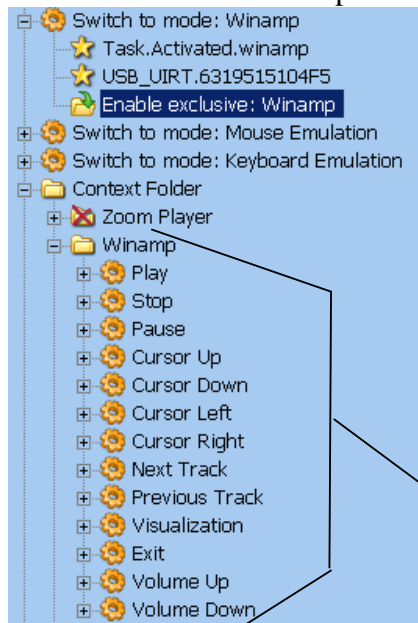
while holding the left mouse button down, drag this item to the Switch to mode: Winamp macro and release the left mouse button, this black line will show that the dropped item will appear below this line



After releasing the left mouse button the IR command is assigned to the Switch to mode: Winamp macro



Now when we push the Start SageTV button on the remote EventGhost will run this command Which enables the Winamp folder and disables all others as shown below



Winamp folder is enabled, which means all these commands will be available after I assign IR commands to them

Dragging and dropping IR commands

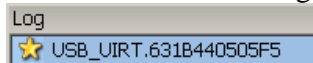
To assign a IR command to the play
click the + sign to expand



Now I pointed my remote at the USB-UIRT pushed the play button on the remote

Now look at the Log in EventGhost

This is the IR code assigned to the Play button, select this with the left mouse button



while holding the left mouse button down, drag this item to the Play command in the Winamp folder
and release the left mouse button, this black line will show that the dropped item will appear below this line



After releasing the left mouse button the IR command is assigned to the Play command for Winamp



I renamed the Winamp to SageTv and added all the commands needed to run SageTV,
I then added the commands for Foobar2000 and have successfully have both of them
running and I am very happy with the results.

This document was created by Scat on May 13, 2007

Modified February 1, 2009

Credits: I want to thank the authors of EventGhost, Foobar2000, and Bitmonster for writing the plugins for SageTv and
USB-UIRT, MonsterMagnet for the plugin for Foobar2000

Thank you very much for all you work.

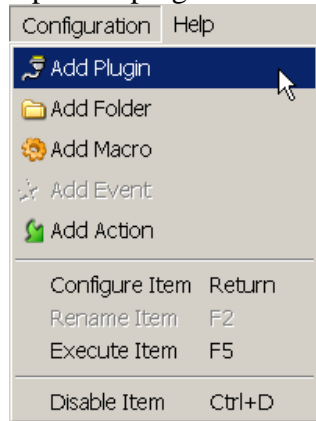
Scat

UPDATE

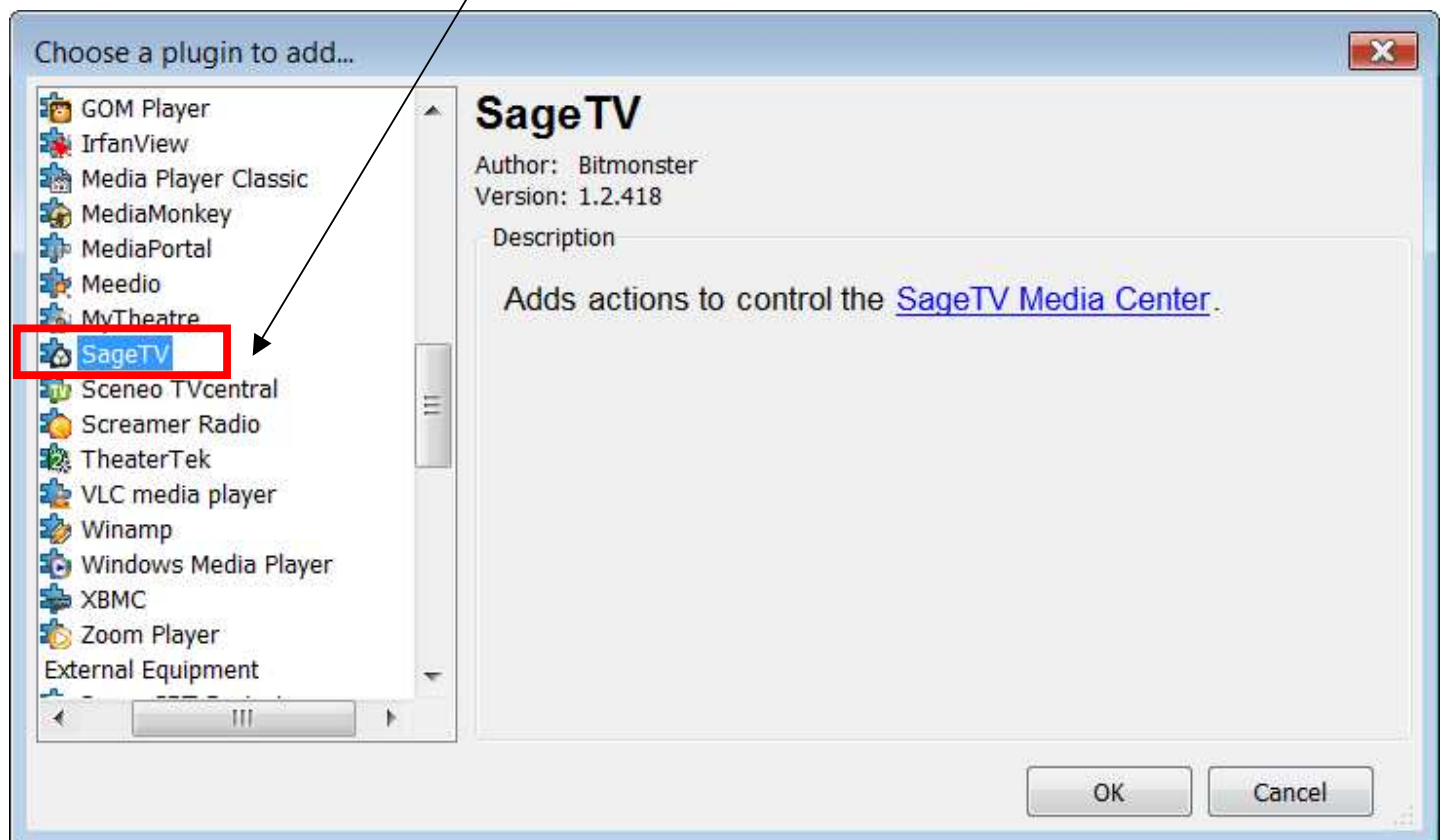
The below pages were updated February 10, 2009

Adding the SageTV plugin

Open the program EventGhost; then select the menu Configuration – Add Plugin

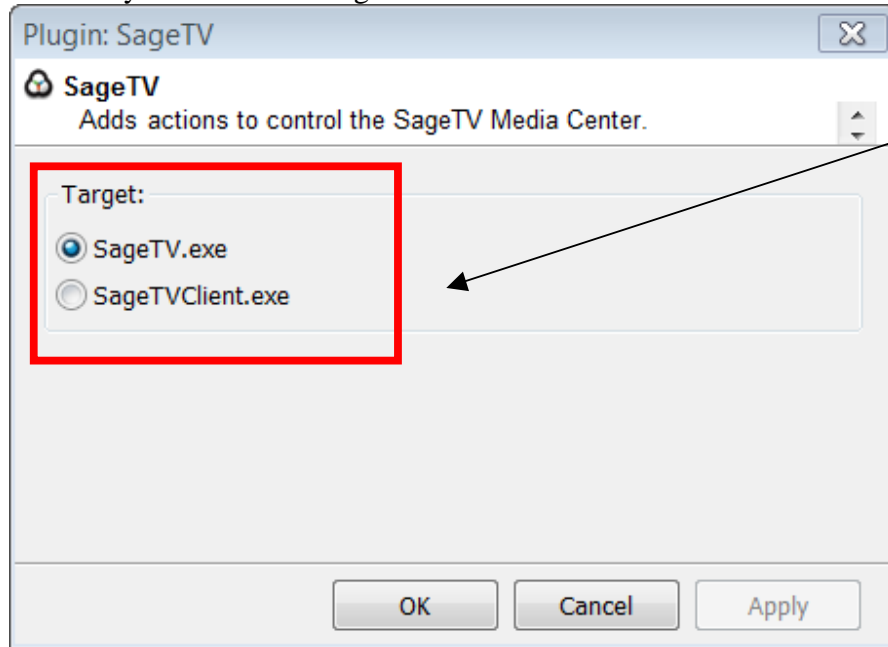


Select SageTV,
Then select the OK button

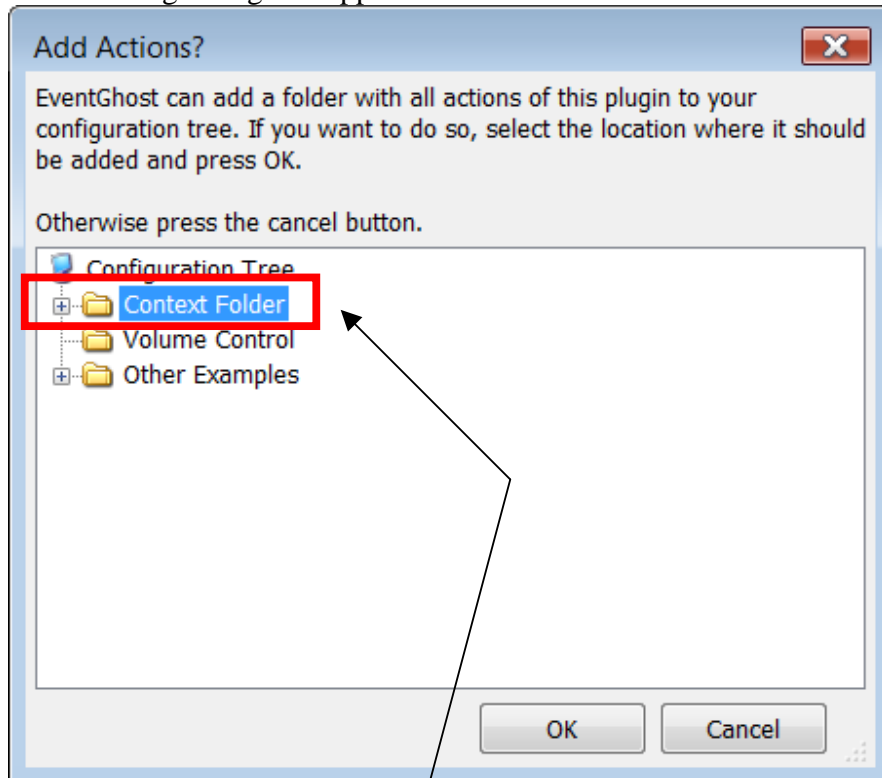


Then select which Target option you will use, SageTV.exe or SageClient.exe
And then click the OK button

Please note if you want to use the same remote in a separate room for a Sage Client
You will have to create a new activity in your Harmony software and duplicate the same hardware
as your original Sage and match all hardware buttons to the same buttons on the remote, then
all you will have to do is open EventGhost and change the SageTV plugin from SageTV.exe to SageClient.exe
and now you can run the Sage Client with all the same buttons as the original Sage.

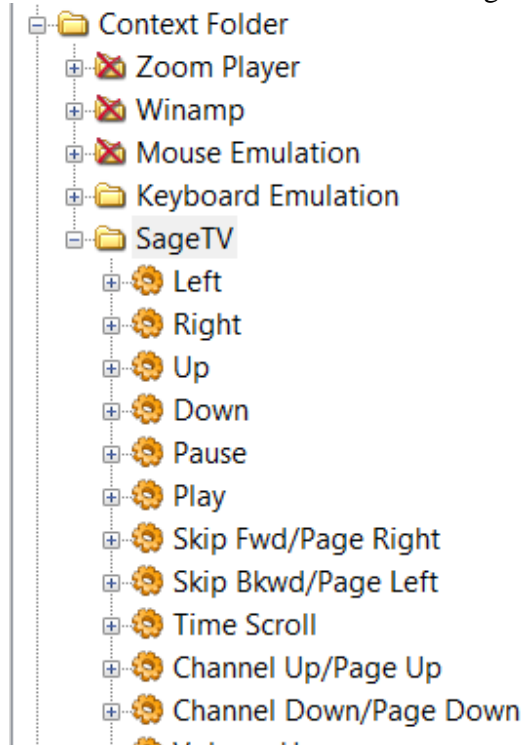


The following dialog will appear

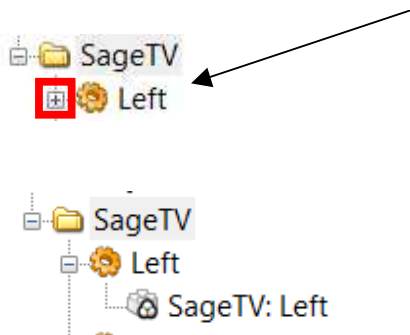


Select the [Context Folder] Item
And then click the OK button

And EventGhost will add all of the SageTV plugin command items automatically



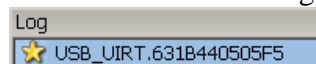
So the only thing to do is assign each command to an item on our remote.
Select + sign to expand the Left item



Now I pointed my remote at the USB-UIRT pushed the left button on the remote

Now look at the Log in EventGhost

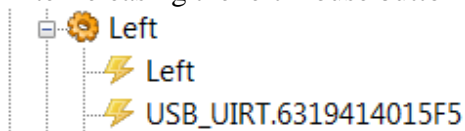
This is the IR code assigned to the Left button, select this with the left mouse button



While holding the left mouse button down, drag this item to the Left command in the SageTV folder and release the left mouse button, this black line will show that the dropped item will appear below this line



After releasing the left mouse button the IR command is assigned to the Left command for SageTV



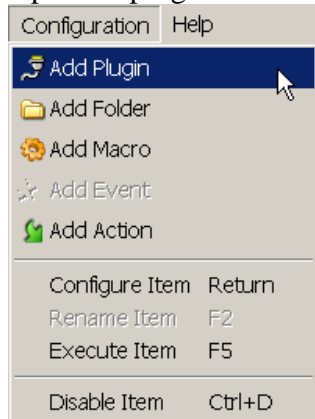
Repeat this routine for all of your remote keys.

Copying items from someone else's XML file

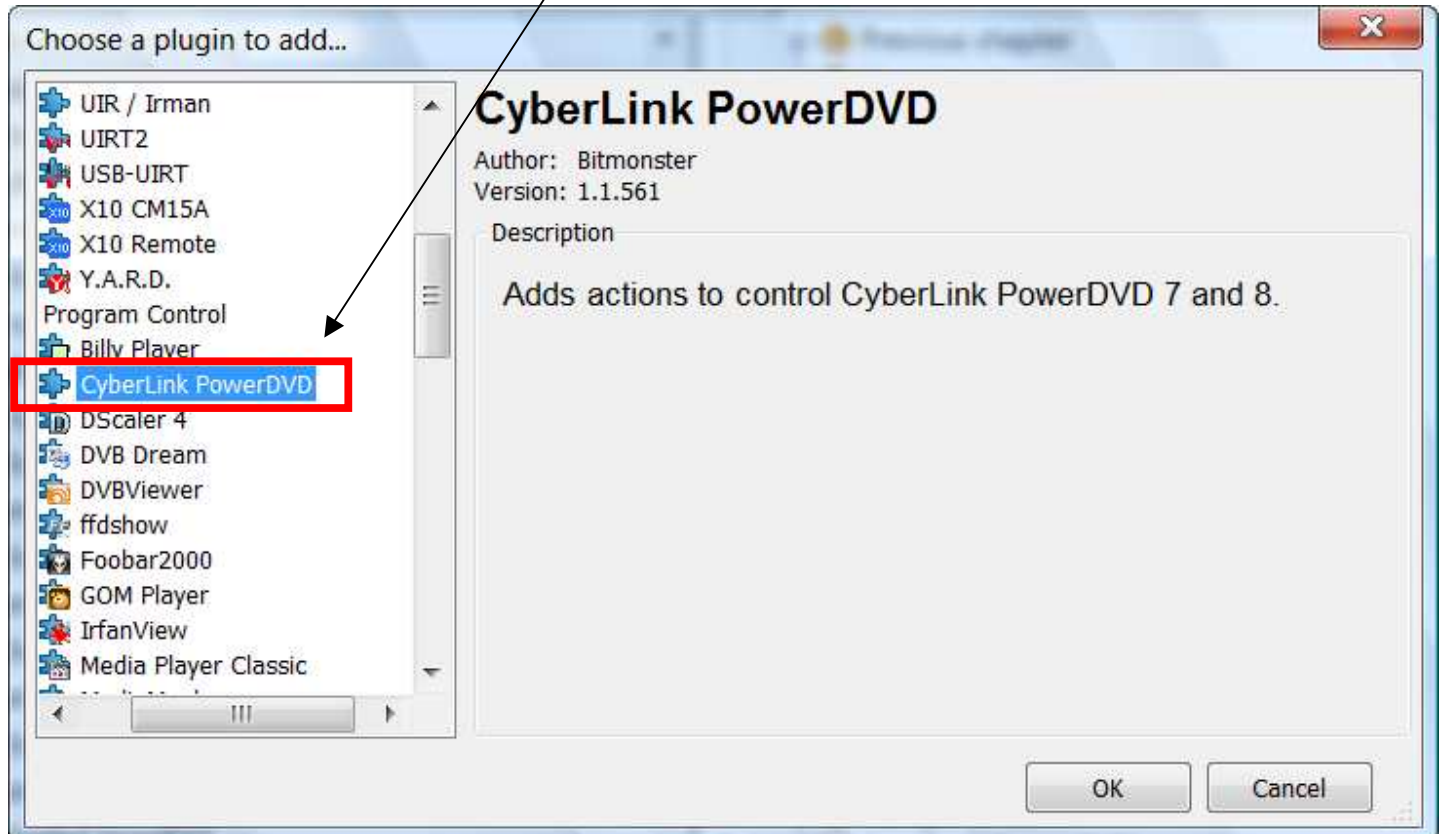
Someone has provided you with their EventGhost .xml file because they have setup PowerDVD and you want that in your .xml file, first you will need to add the PowerDVD plugin to your .xml file

Adding the CyberLink PowerDVD plugin

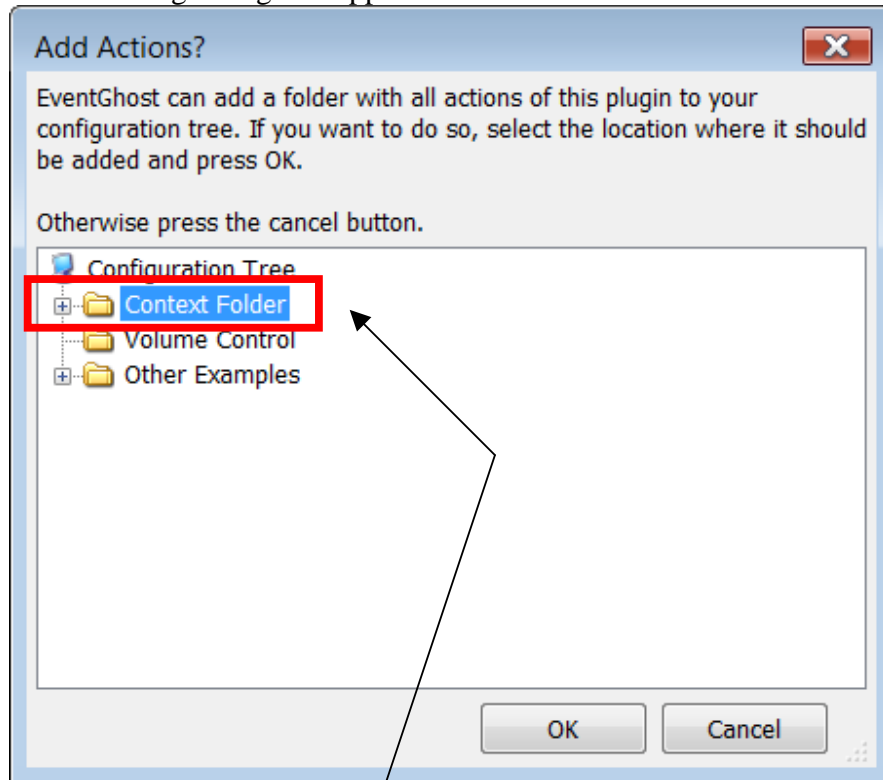
Open the program EventGhost; then select the menu Configuration – Add Plugin



Select CyberLink PowerDVD
Then select the OK button

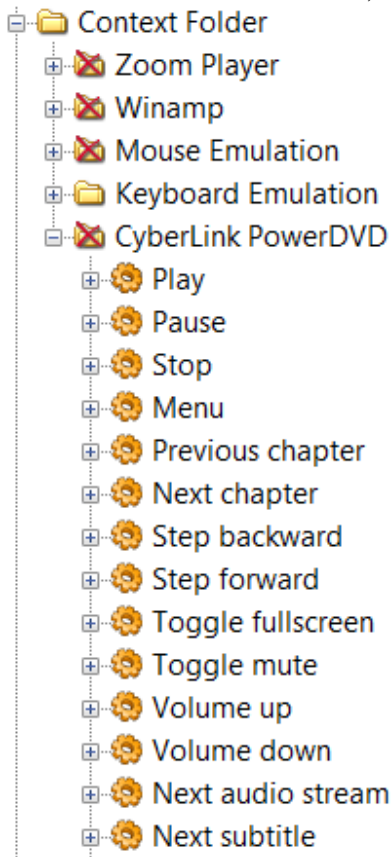


The following dialog will appear



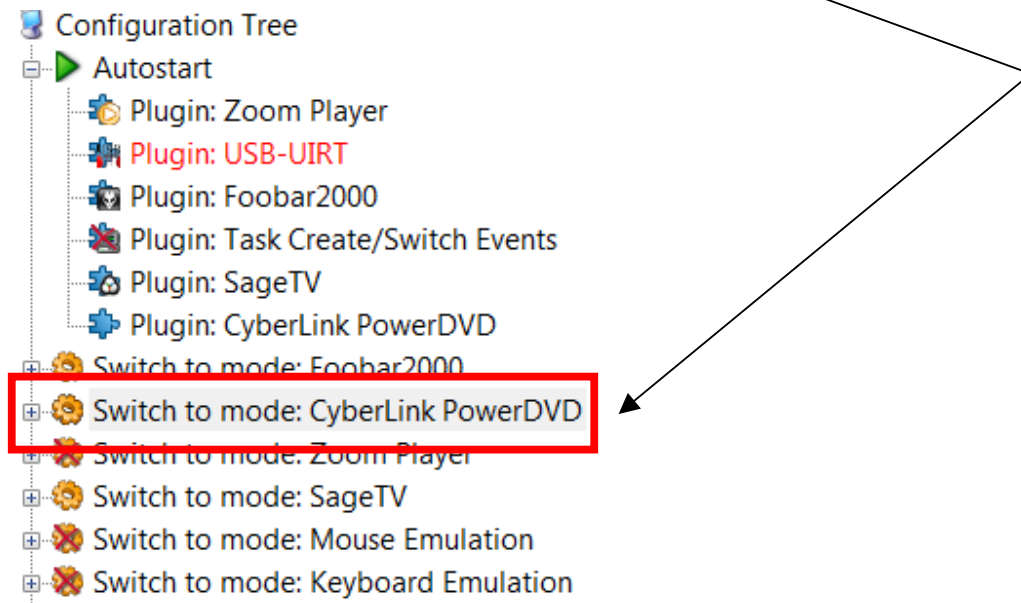
Select the [Context Folder] Item

And then click the OK button; this will add plugin command items automatically

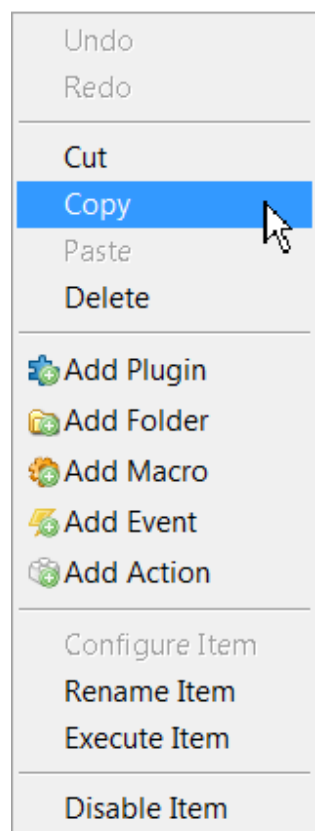


Then save your current file, and open the others person's .xml file

Select there item: Switch to mode: CyberLink PowerDVD

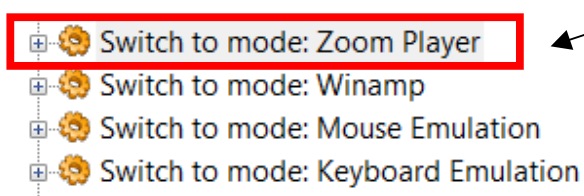


Then right-click and choose Copy

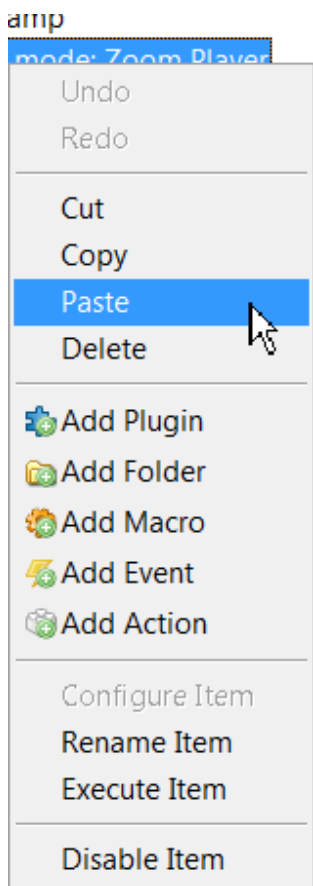


Now open up your .xml file

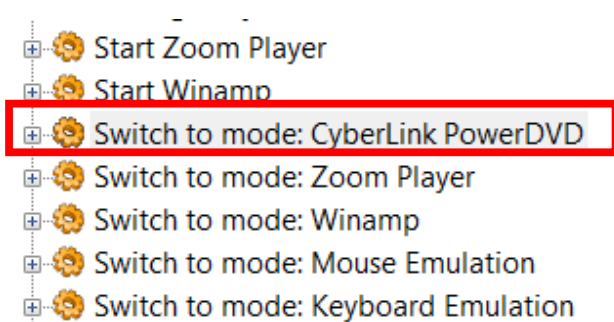
Then select any one of the previous items marked: Switch to mode



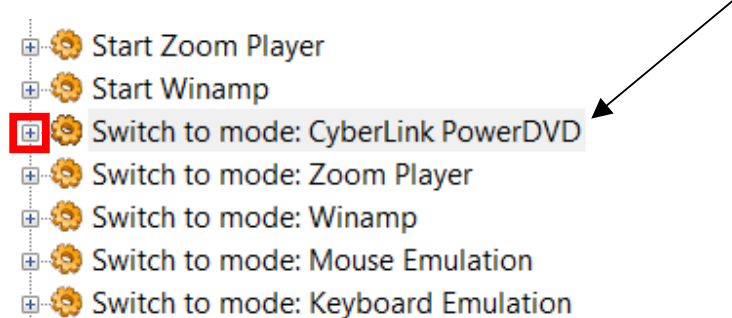
Then Right-click and choose paste



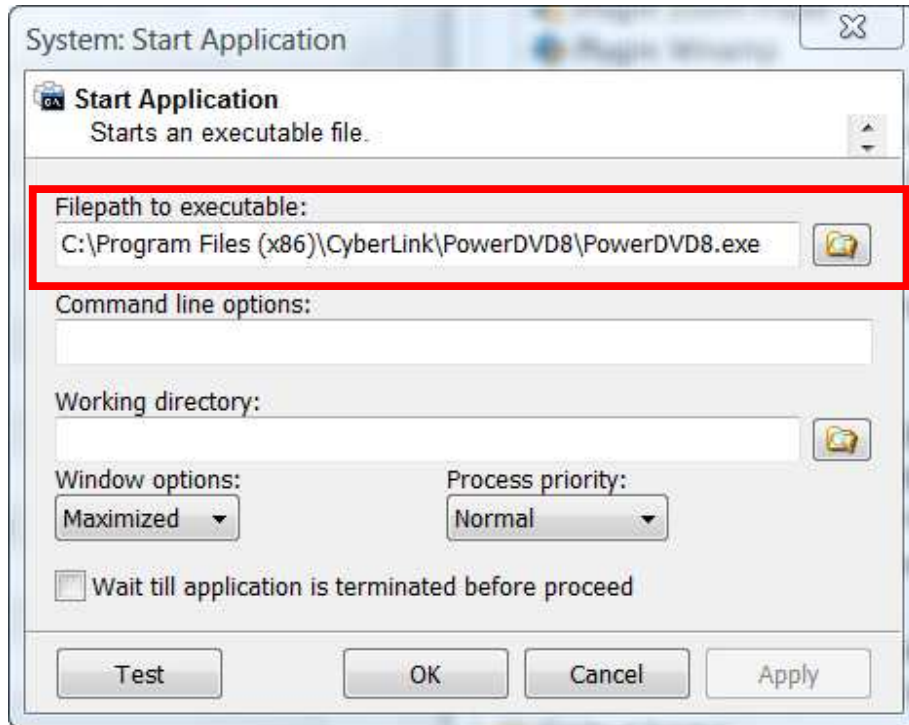
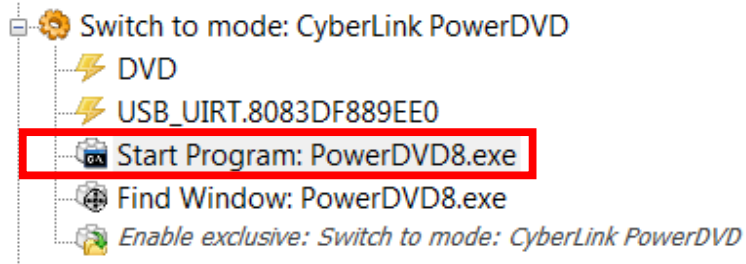
and then the (Switch to mode) will be pasted into the current .xml file



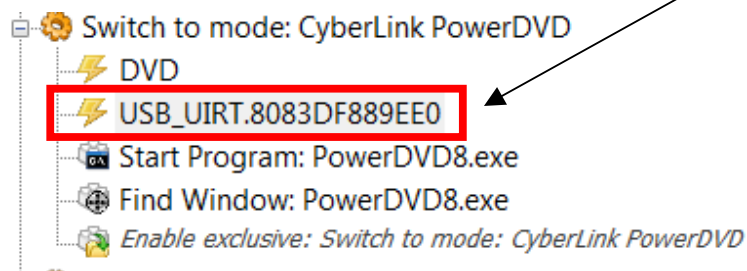
Click the + sign to expand



Double-click this item and verify that the path is correct for your version of PowerDVD



All you have to do is delete the prior IR command and set your own IR command to start PowerDVD



You will then have to set all the IR commands you want to control
The PowerDVD plugin to your remotes IR commands,
see above for [Dragging and dropping IR commands](#) examples.