

I created a Girder MiltiGroup ... The Girder Help Files says;

Multigroup

A multigroup is a set of commands, all activated by a single event “trigger”, kind of like a macro! So, a single trigger can activate several commands like, Open app, select song, increase volume, and then play!

Since there is no event codes for sub menus created in SageTV with Dynamic Menus, I was attempting here to trick the system and use a Girder MiltiGroup and sendmessage “event numbers” to create a Girder command that moves the menu cursor **down** and then selects when I am at the **home** screen. The problem is after I set it up and try to assign it to a remote control button it adds an “EventString”, and when I try it in Sage it does nothing??




Thinking about it, if I get this Girder Macro thing to work, I will probably change the to the following;

Home, Up, Up, Up, Up, Up, Up, Down, Select

This will cover moving to the Main menu from anywhere, move to the top Menu Item should the cursor not be at the top and then move down one and select which is the My Menu submenu.

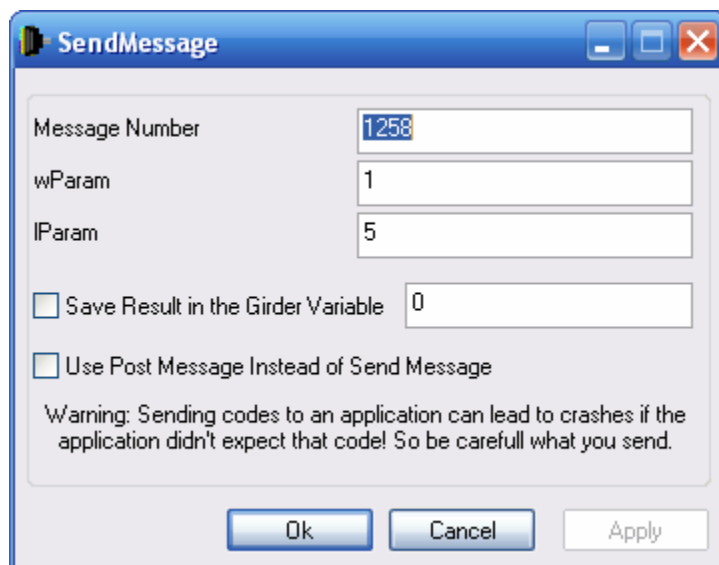
So, the bottom line question is how do I assign a MultiGroup to a Remote Button?

This is what I did;

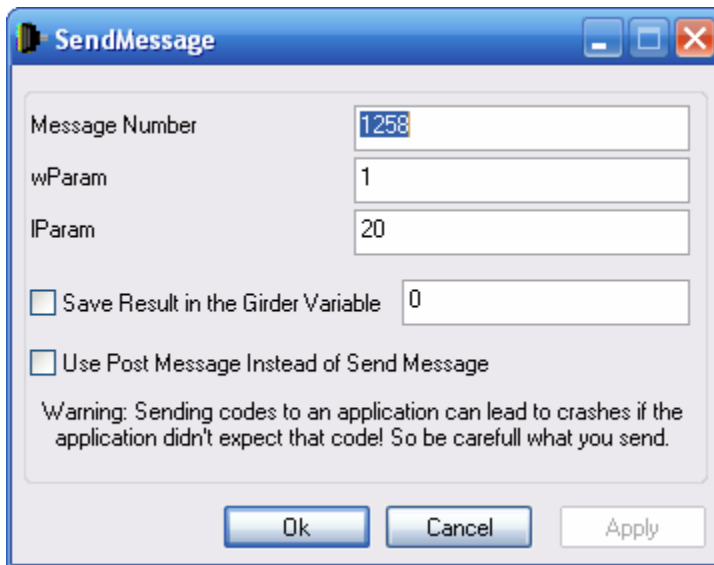
-  **Created a MultiGroup called “My Music”**
-  **Created a Command called “Down” in the MultiGroup**
-  **Created a Command called “Select” in the MultiGroup**



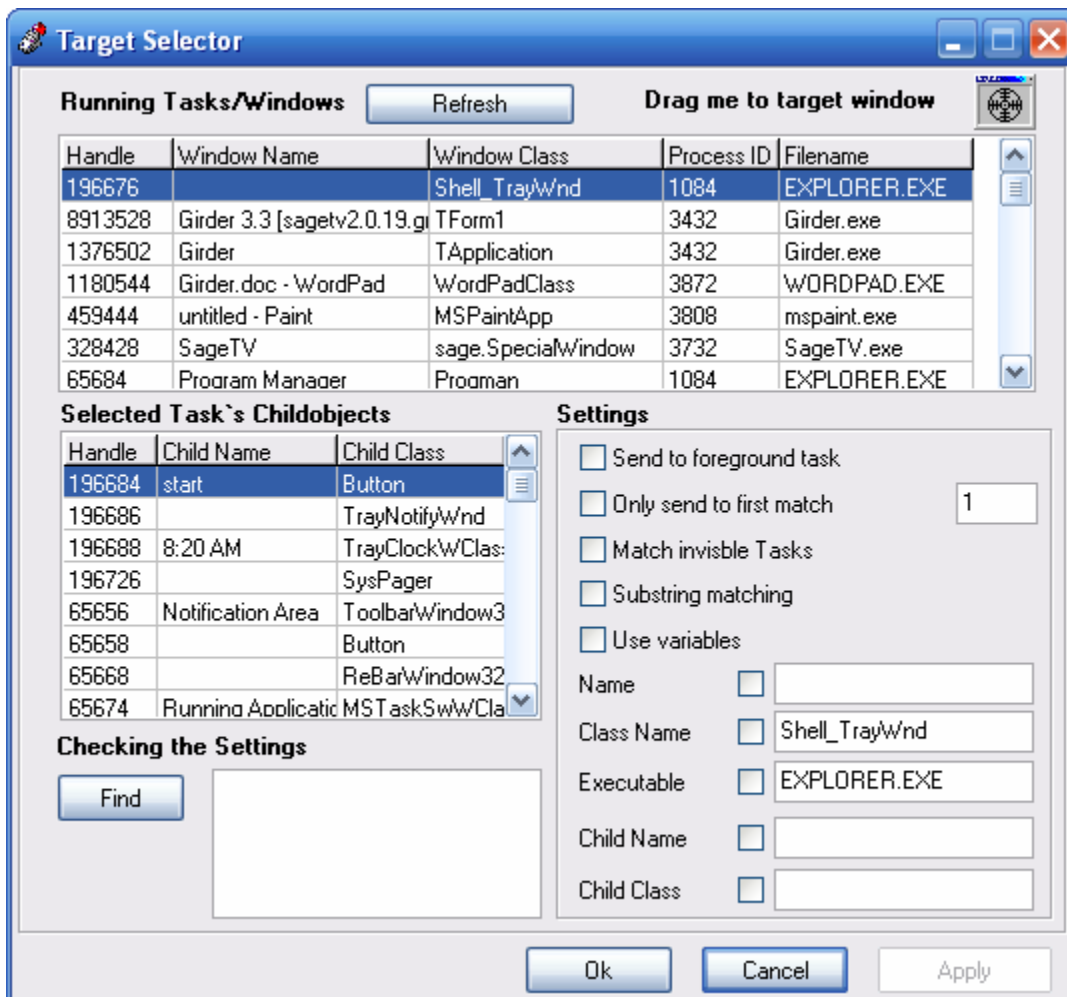
Used **Event Number 5** for the **Down** SendMessage Command



Used **Event Number 20** for the **Select SendMessage** Command



Assigned the **Target** to Explorer



Used **Learn Event** to assign to the Music Key on my Firefly Remote



Girder created an **EventString** under the MultiGroup ??



But ... Sage didn't respond to the assigned MultiGroup???
I expect I must be doing something wrong!

Here is another MultiGroup use I thought of ...

I don't like pressing **Stop** with Sage 4 and ending up at the Guide ... So I also thought I could just create a MultiGroup send the Stop command and then Home and then assign that to the Stop Button :o) ...

Oh, In the case below I even tried copying the **Close File** and **Home** Commands already in the Girder Sage Plug-in in to my "Stop Home" MultiGroup ...

Same result ... *I still have to figure out how to assign a MultiGroup to a Remote Button???*

