

1 You will need

MyTheatre (Saar)

<http://www.dvbcore.com/MyTheatre.html>

MyTheatre DVB Network Encoder Plugin – (PeterJB)

<http://forums.sagetv.com/forums/showthread.php?t=12473>

xmltv2mtepg - Parser xmltv / Reverse Parser for MT (Dominique PLU)

http://board.mytheatre.ru/dload.php?action=file&file_id=155

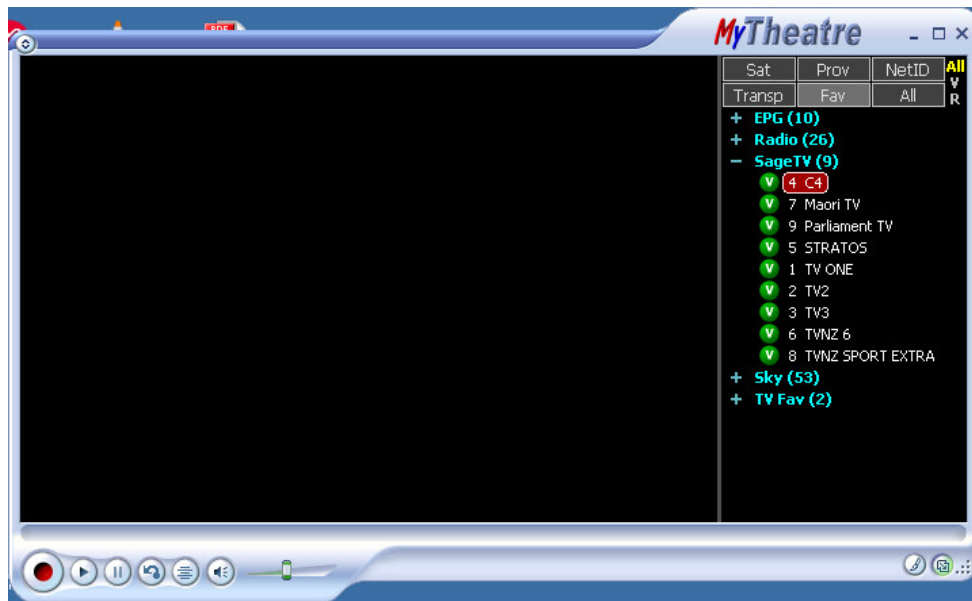
XMLTV Import Tool (StephaneM)

<http://forums.sagetv.com/forums/showthread.php?t=17566>

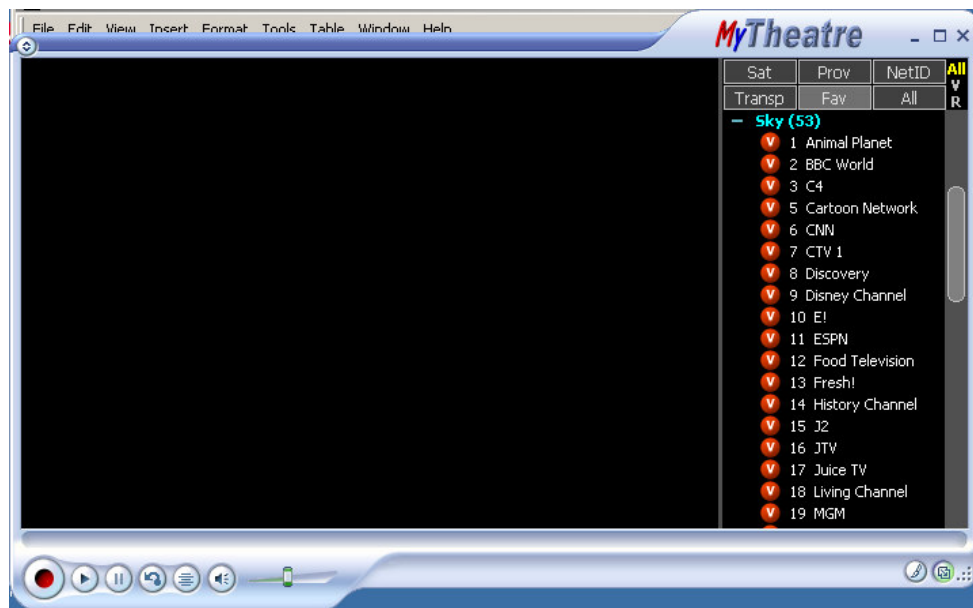
2 MyTheatre and Network Encoder

Setup MyTheatre and install the Network encoder plugin as described in PeterJB's excellent guide.

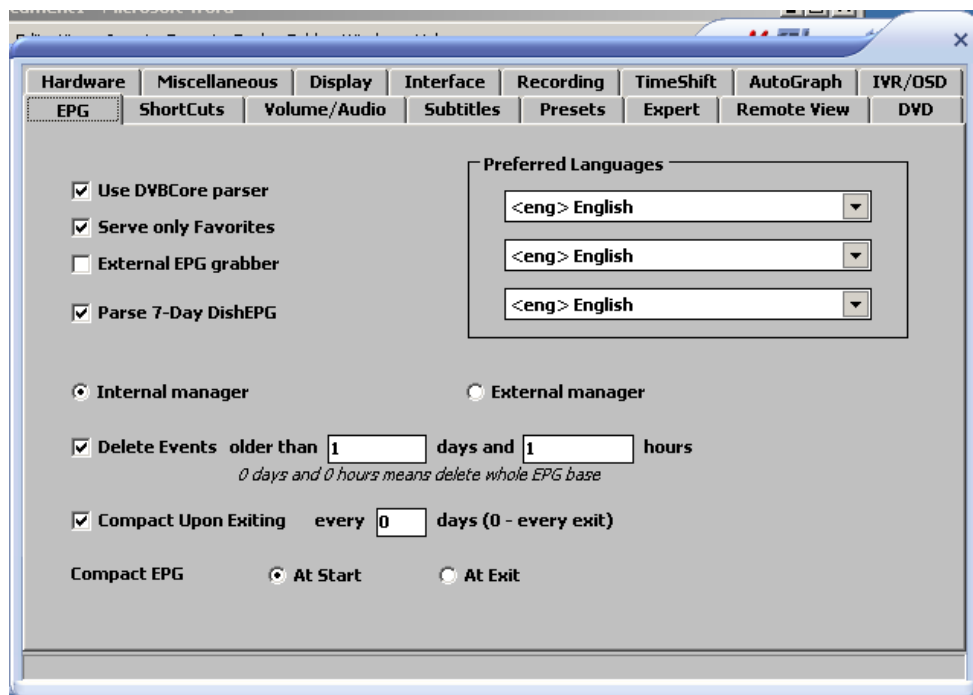
As Peter suggests create a favorites folder "SageTV" (it doesn't matter what you call it though) and put the Freeview channels in there.



And all the Sky channels in a separate folder “Sky”



On the MyTheatre settings page set up the EPG capture



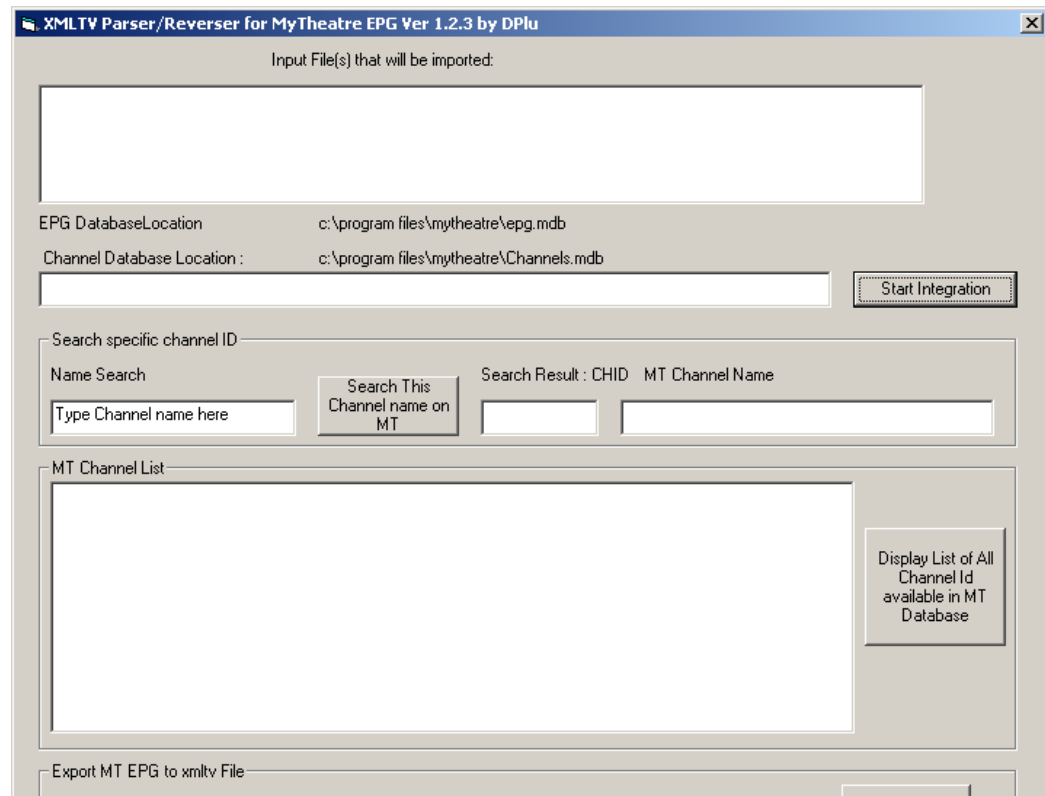
You'll see the EPG data file c:\program files\mytheatre\epg.mdb grow and if you have MS Access you will be able to open the epg.mdb file and check the EPG data.

3 xmltv2mtepg

Unzip the download into its own folder. It's a stand alone application and not part of MyTheatre but I put it in a folder under the main MyTheater

c:\program files\mytheatre\xmltv\

Despite its title this app imports and XMLTV into My Theatre EPG file and also exports the EPG to XMLTV format. Were not using the import but will use the export.



My .ini file looks like this if you run the xmltv2mtepg.exe the screen above will open process and the automatically close again and a file

C:\program files\mytheatre\xmltv\xmltvout.xml will be created

```
-----  
[SETUP]  
EPGFILE=c:\program files\mytheatre\epg.mdb  
CHANNELFILE=c:\program files\mytheatre\Channels.mdb  
LOGFILE=c:\program files\mytheatre\xmltv\xmltv2mtepglog.txt  
AUTOCLOSE=1  
AUTOPROCESS=1  
MONTHBEFORE=1  
USE_CHNUM=0  
USE_TM_OFFSET=0
```

EXPORT_TM_OFFSET=

[TVFILE]

XMLFILE1=

XMLFILE2=

XMLFILE3=

XMLFILE4=

XMLFILE5=

[EXPORTING]

EXP_DEF_LANG=en

FAV_ONLY=1

SAGE_FMT=1

EXPORTXML=C:\program files\mytheatre\xmltv\xmltvout.xml

SAGE_TM_OFFSET=+0100

EXP_AUTORUN=1

THIS_FAV_ONLY=0

PG_ON_SHORTDESCR=1

MIX_SHORT_LONG_DESC=1

GUESS_PRG_CATEGORY=1

RUN_INVISIBLE=0

FIND_HD_TAG=1

[EXPCATEGORY]

search1=Movie.

Category1=Movie

FirstRunTag1=New.

search2=Series/Special

Category2=Series

FirstRunTag2=New.

search3=Sports.

Category3=Sports event

FirstRunTag3=Finale.

search4=News.

Category4=News

search5=News/

Category5=News

search6=Film.

Category6=Movie

FirstRunTag6=New.

search7=Family/Children.

Category7=Children

search8=journée.

Category8=News

;

;

Search30=latest_cat_search

Category30=latest_category

[MTGRABBER]

```
EXPORTXML=C:\program files\mytheatre\xmltv\xmlteexp.xml
EXPORT_TM_OFFSET="+0100"
```

[TPS]

```
DAT_LOCATION=c:\program files\mytheatre\xmltv\otvepg.dat
```

```
IMPORT_MODE=FULL
```

```
IGNORE_TAG=
```

```
ASSEMBLE_TAG=
```

```
CHANNEL_MAP=c:\program files\mytheatre\xmltv\chmap.dat
```

[CHANNELMAP]

4 XMLTV Importer

Follow the instructions and setup the XMLTV importer

<http://www.lmgestion.net/@en-us/4/22/54/59/article.asp>

Set up XMLTV importer to read the C:\program files\mytheatre\xmltv\xmltvout.xml created by xmltv2mtepg and to run xmltv2mtepg to update the XML

XMLTV Source

Choose a name for your new XMLTV source (no space allowed, cannot starts with a number)

XMLTV File:

Grabber Executable:

Grabber Arguments:

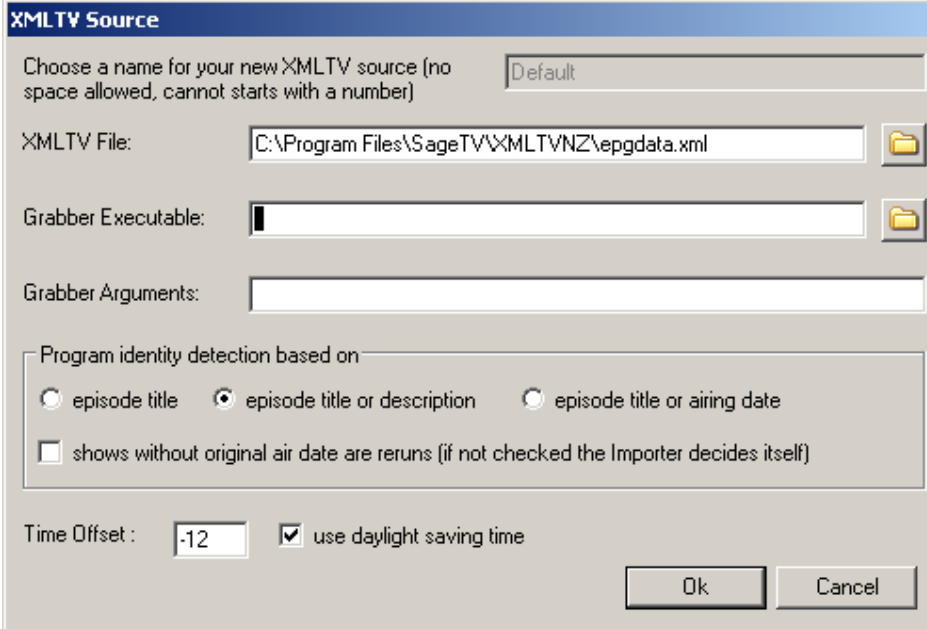
Program identity detection based on

episode title episode title or description episode title or airing date

shows without original air date are reruns (if not checked the Importer decides itself)

Time Offset : use daylight saving time

In my case I am still processing the XMLTVNZ EPG created by Reven's utility

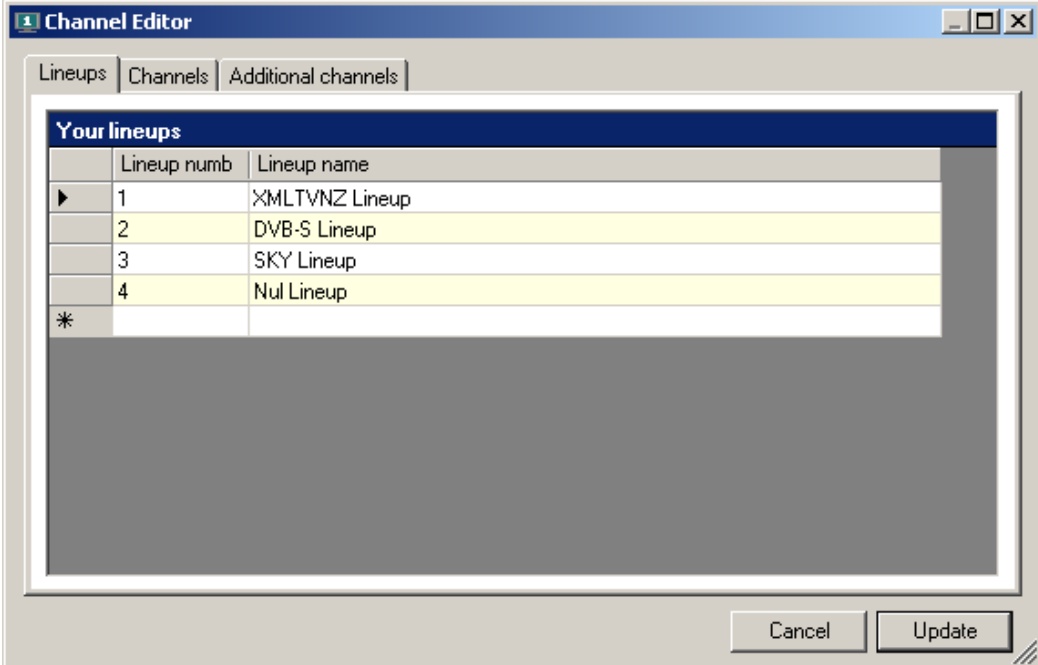


The dialog box is titled "XMLTV Source". It contains the following fields and options:

- A text field for the source name, currently set to "Default".
- An "XMLTV File" field with the path "C:\Program Files\SageTV\XMLTVNZ\epgdata.xml" and a folder icon.
- A "Grabber Executable" field with a folder icon.
- A "Grabber Arguments" field.
- A section for "Program identity detection based on" with three radio buttons: "episode title", "episode title or description" (selected), and "episode title or airing date".
- A checkbox labeled "shows without original air date are reruns (if not checked the Importer decides itself)".
- A "Time Offset" field set to "-12" and a checked checkbox for "use daylight saving time".
- "Ok" and "Cancel" buttons at the bottom right.

I have created four lineups,

- my original XMLTVNZ lineup
- A DVB-S lineup for the Freeview channels
- A SKY lineup
- Nul lineup for the duplicates that exist in the data



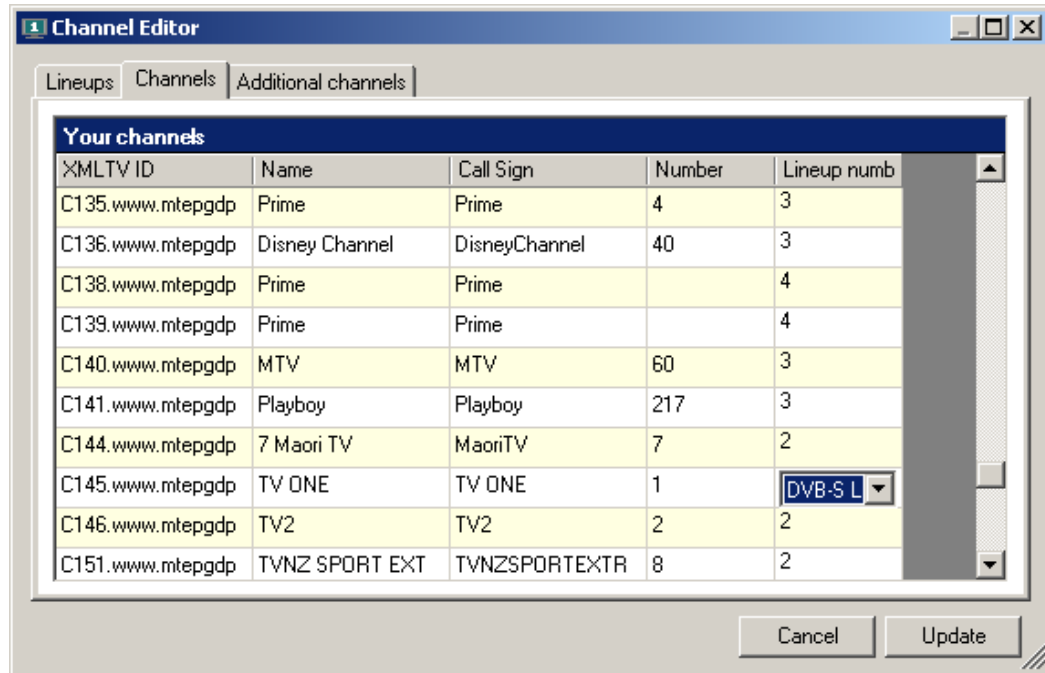
The dialog box is titled "Channel Editor" and has three tabs: "Lineups", "Channels", and "Additional channels". The "Lineups" tab is active, showing a table of lineups.

Your lineups		
	Lineup numb	Lineup name
▶	1	XMLTVNZ Lineup
	2	DVB-S Lineup
	3	SKY Lineup
	4	Nul Lineup
*		

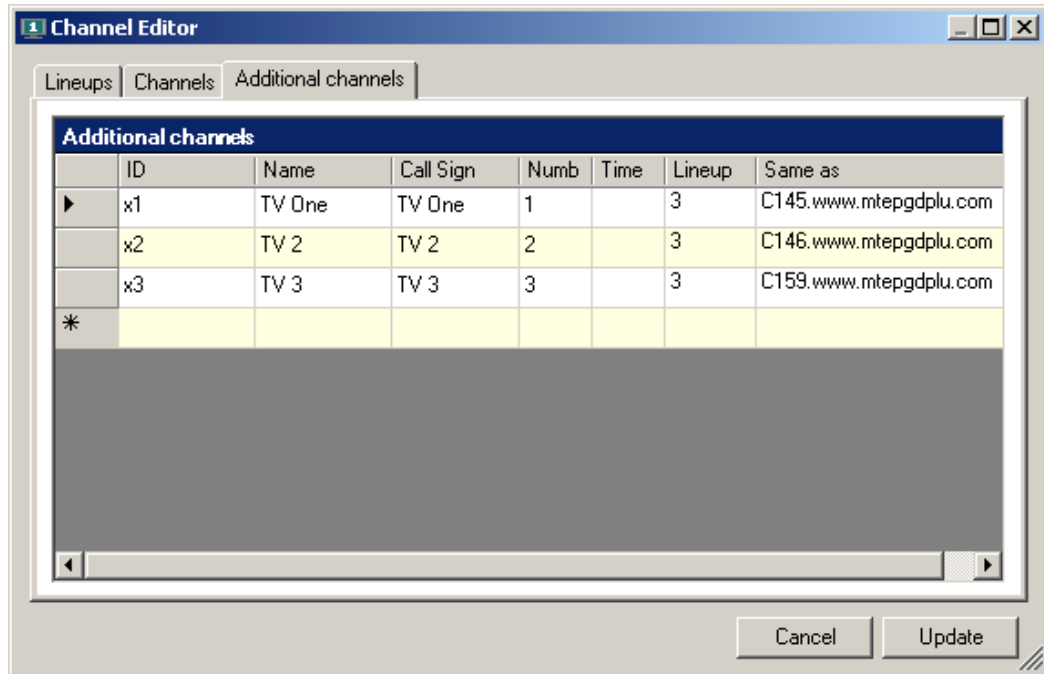
At the bottom right, there are "Cancel" and "Update" buttons.

Go through the channels list and number all the channels and set each against the lineup you want the channel to be in

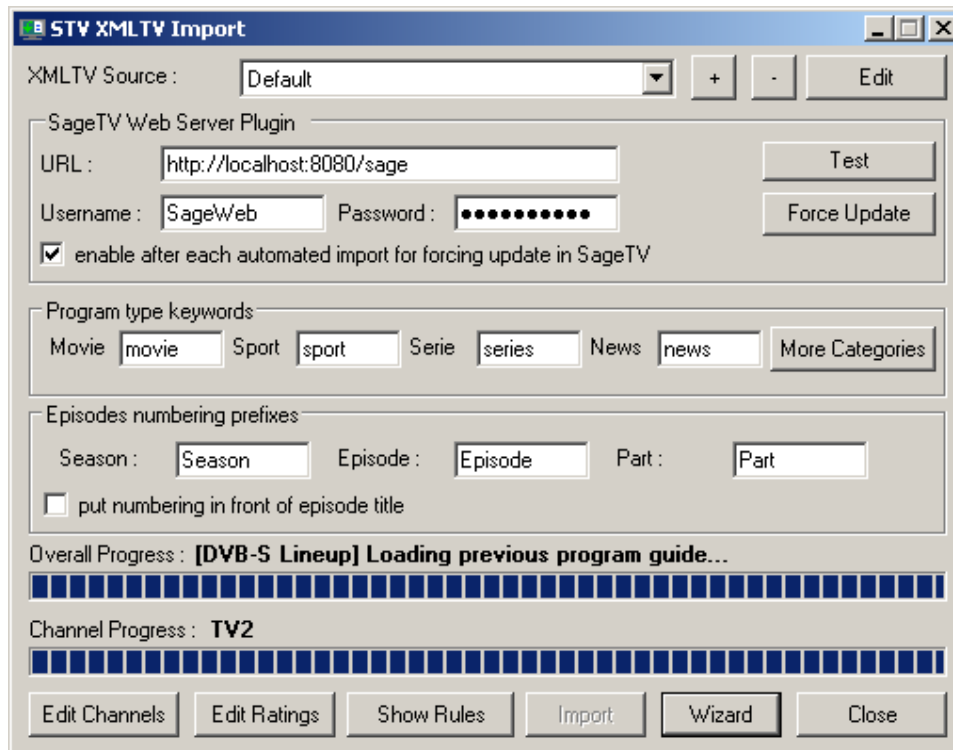
For the Freeview channels I've numbered them 1 to 9 and for the SKY channels put the SKY channel number



As TV1, 2 and 3 are duplicated in Sky and Freewiew choose one only source to provide the EPG data and replicate it the "additional channels" tab. Set the duplicates to the nul lineup without number. I believe if you don't do this SageTV will not recognise the programme as being the same and try to record both simultaneously on each tuner card



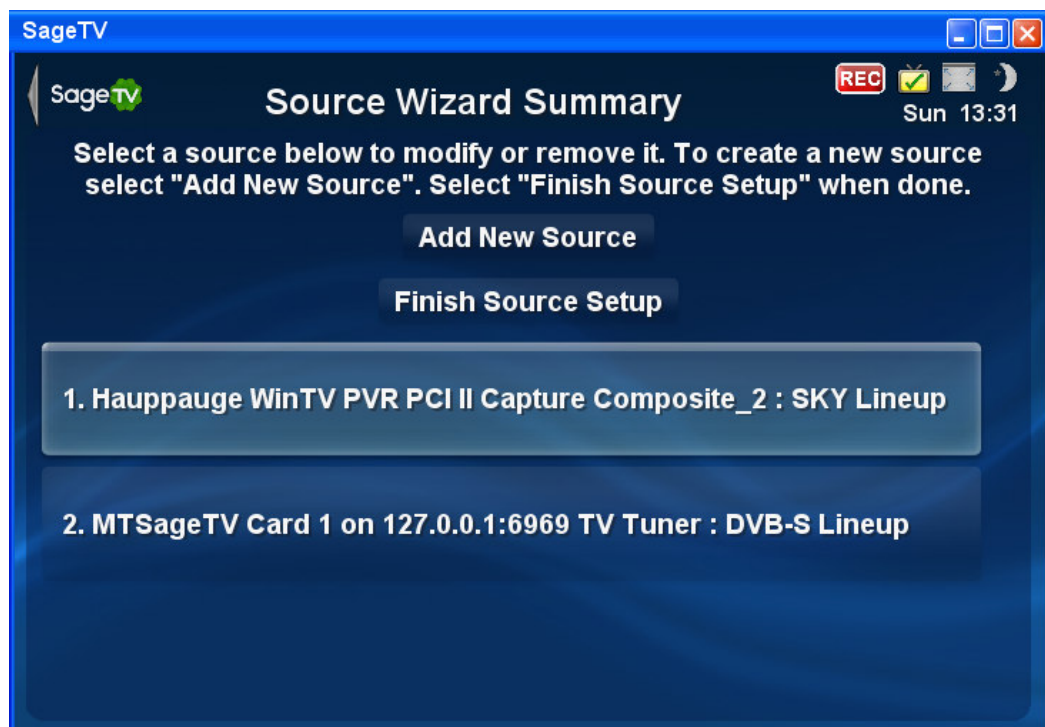
Run the import



5 SageTV

Once you have run the importer you will have 4 lineups to choose from when you set up your sources in SageTV

Of course use the DVB-S lineup for the DVB-S card and the SKY lineup for the card



In the programme guide you will see the duplicate channels one for each source

SageTV

SageTV Program Guide

Sun 11:48

Shortland Street Omnibus, Sun 28/10 10:00 - 12:00
 Shortland Street Omnibus - Shortland Street Omnibus
 Other

	Sun 28/10	11:30	12:00	12:30	13:00	13:30	14:00
2 TV 2	Shortland Street ...	Movie: Halloweentown				Rodney	Ever wood
2 TV2	Shortland Street ...	Movie: Halloweentown				Rodney	Ever wood
3 TV 3	Home And Away 20 ...	Surfing The Menu: New ...	Kelsey Gram...	Beverly Hills 90210		The Law Firm	
3 TV3	Home And Away 20 ...	Surfing The Menu: New ...	Kelsey Gram...	Beverly Hills 90210		The Law Firm	
4 C4	Blender	C4's Biggest Records... Right Now		Blender		What's The ...	
4 Prime	Star Trek: Voyager		Star Trek: Voyager		Retravisision Rugby		
5 STRATOS	Bible Ministry	VRT Journaal	NOS Journaal	Roopa		Mirchee Indian ...	
6 TVNZ6	Fraggle Rock	Miss Spider...	Party Animals	...	George And ...	You And Me	